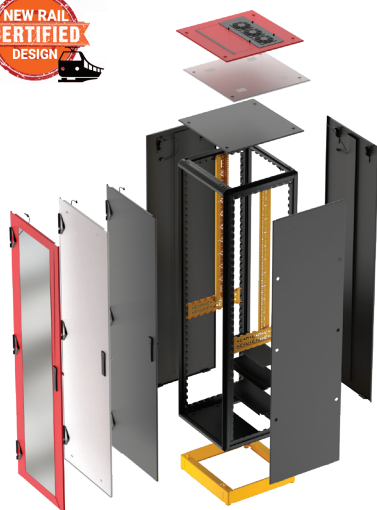
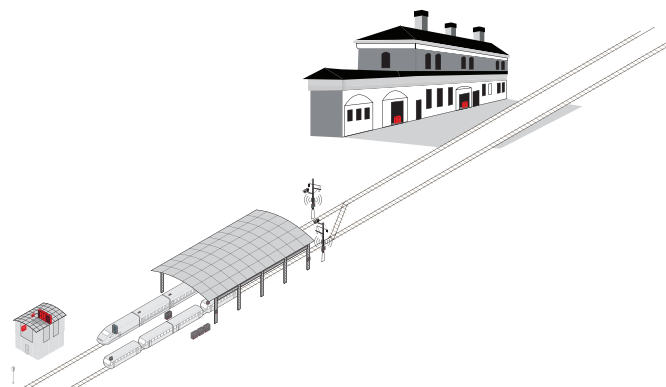


# Varistar for Rail

## CERTIFIED ELECTRONICS CABINET FOR INDOOR RAILWAY APPLICATIONS

The **nVent SCHROFF Varistar** electronics cabinet platform enables leaders in railway infrastructure applications deliver best in class solutions for signaling and communications for trackside indoor use.

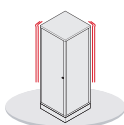
Customers value nVent SCHROFF for their global manufacturing capability, design support throughout projects and ultimately for high performance railway certified cabinets that can be easily modified to meet various application requirements and also to reflect individual brand identity.



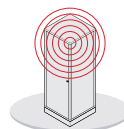
### RAILWAY CERTIFICATIONS

The **nVent SCHROFF Varistar EMC** cabinet has a robust, welded, heavy-duty frame and is specifically tested and certified for railways trackside indoor applications:

- IEC 61 587-1 for robust mechanical structure & physical performance
- EN 61000-5-7 and IEC 61587-3 for advanced EMC shielding up to 18 GHz
- IEC 60529 for ingress protection up to IP55
- EN 45545-2 for Low Smoke Zero Halogen compliance
- CENELEC EN 50125-3 certification for smooth performance against shock & vibration for trackside use (1-3 m from the track)
- AREMA 11.5.1 class C (designed to meet US railway standards for trackside use in bungalows)



Shock & Vibration



EMC Protection



Ingress Protection

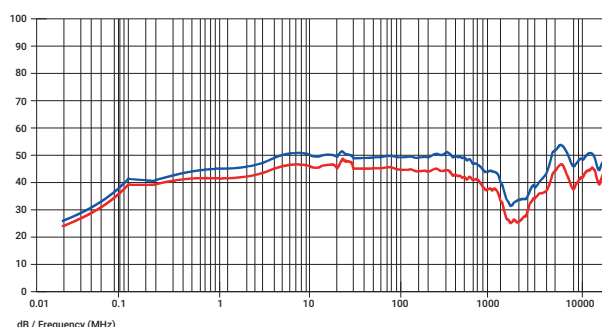


RoHS Compliance

### EMC SOLUTION

The **Varistar EMC** is one of the very few electronic cabinets which has been tested successfully according to EN 61000-5-7 up to 18 GHz in addition to IEC 61587-3 and offers best-in-class shielding protection: Attenuation of 40 dB at 3 GHz and 30 dB at 10 GHz with a solid door.

These IP55 / EMC gaskets are now available with EN 45545-2 certification. All cladding parts are electrically connected and induced interference currents flow automatically away via the surfaces.



### NEW ROBUST AND ERGONOMIC HANDLE

The Varistar IP55 & EMC cabinets have an advanced ergonomic handle with improved EMC shielding and high durability. The handle is specially designed for all 3 & 4 latch locks for improved ingress protection and EMC performance. For the cabinet operator, the handle is sturdy but also has a smooth edge for comfort, providing an improved user experience.

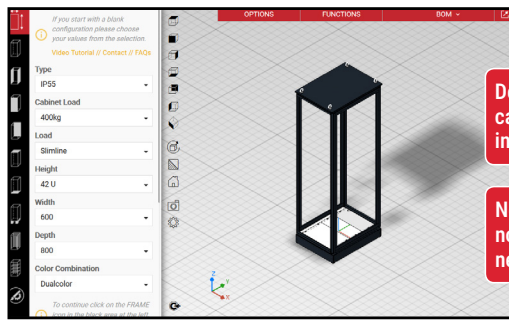
### INTELLIGENT COOLING SOLUTIONS

Depending on the amount of heat generated and the internal and external ambient temperatures, multiple cooling options are available as standard to ensure effective cooling:

- Air-filtered fans
- Fan trays
- Air-to-air or air-to-water heat exchangers
- Compressor-driven air conditioners.

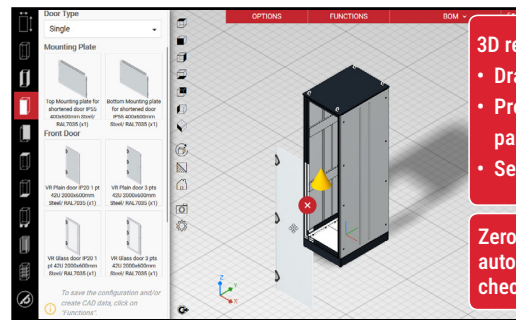
## VARISTAR FOR RAILWAY: CREATE YOUR OWN SOLUTION INSTANTLY

nVent SCHROFF enables railway customers to tailor a Varistar electronics cabinet in minutes, using a free web based interactive, the **nVent Configurator**: <https://schroff.nVent.com/en/schroff/cad-configurators>.



Design your individual cabinet in a graphical interface

No registration and no software download needed



3D real-time visualization:  
• Drag & drop functionality  
• Pre-defined parts and parameters  
• See it as you design it

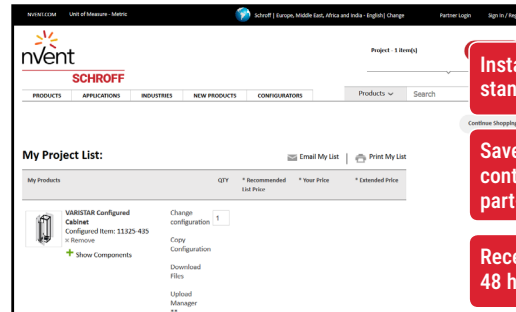
Zero errors, through automated compatibility check



Bill-of-material and 2D / 3D CAD models for instant download

Easy forwarding of files to colleagues or partners

Simplification of internal decision-making processes



Instant pricing for standard parts after login

Save your configuration, containing unique part-numbers

Receive a quotation within 48 hours



### DESIGNED.CONFIGURED.DELIVERED

- Designed to meet railway certifications
- Easily configured to meet various application requirements and to reflect individual brand identity
- Delivered globally, supported locally

#### EUROPE

**Straubenhardt, Germany**

Tel: +49.7082.794.0

**Betschdorf, France**

Tel: +33.3.88.90.64.90

**Warsaw, Poland**

Tel: +48.22.209.98.35

**Assago, Italy**

Tel: +39.02.5776151.224

#### NORTH AMERICA

**All locations**

Tel: +1.763.422.2661

#### MIDDLE EAST & INDIA

**Dubai, United Arab Emirates**

Tel: +971.4.37.81.700

**Bangalore, India**

Tel: +91.80.6715.2001

**Istanbul, Turkey**

Tel: +90.216.250.7374

#### ASIA

**Shanghai, P.R. China**

Tel: +86.21.2412.6943

**Qingdao, China**

Tel: +86.523.8771.6101

**Singapore**

Tel: +65.6768.5800

**Shin-Yokohama, Japan**

Tel: +81.45.476.0271



Our powerful portfolio of brands:

**CADDY ERICO HOFFMAN RAYCHEM SCHROFF TRACER**