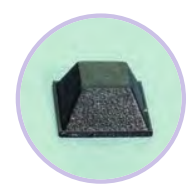
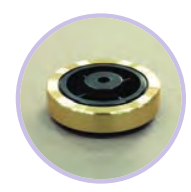
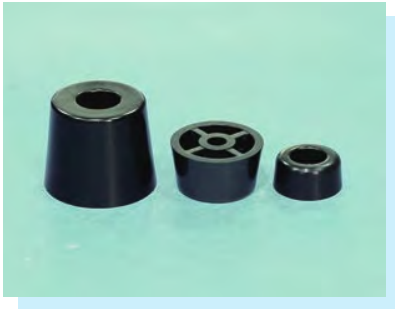
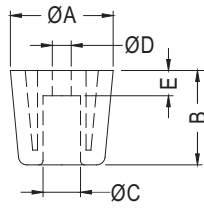

- ★ RUBBER FOOT
- ★ PLASTIC FOOT
- ★ SCREW
- ★ EVA FOAM



PLASTIC FOOT



- ◆ MATERIAL:ABS/PP
- ◆ COLOR:BLACK
- ◆ UNIT:mm

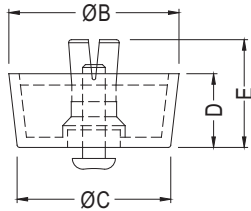


PART NO	A	B	C	D	E	PACKAGE
FFT-1	15.0	8.0	7.5	3.7	3.5	1000
FFT-2	20.0	12.1	8.2	4.1	5.5	500
FFT-3	25.1	16.2	10.4	4.3	8.1	100
FFT-4	24.4	22.4	8.9	4.6	6.0	
FFT-5	26.0	12.7	10.9	5.1	5.7	
FFT-6	22.5	22.4	8.6	4.6	6.0	
FFT-7	17.0	17.0	7.5	3.2	6.0	
FFT-8	19.8	20.0	9.5	4.2	5.7	500
FFT-9	20.0	12.8	9.5	3.6	5.7	
FFT-10	20.0	10.5	9.2	4.4	4.0	
FFT-11	28.5	8.2	11.29	7.1	6.0	100

PLASTIC FOOT



- ◆ MATERIAL:PE/TPR
- ◆ PIN MATERIAL:PP
- ◆ COLOR:BLACK/GRAY/COMPUTER
- ◆ UNIT:mm

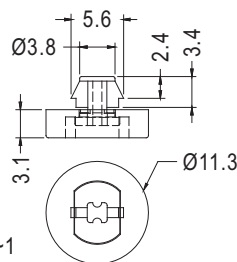


PART NO	A	B	C	D	E	CHASSIS THICKNESS	PACKAGE
FF-1	8.0	20.8	19.8	6.4	11.8	1.0~2.5	500
FF-2		20.0	18.0	10.0	15.4		
FF-3		23.7	19.5	13.7	19.2	1.0~2.5	250
FF-4		25.0	23.5	6.5	12.5		
FF-5		30.0	27.7	12.8	18.8		
FF-6	10.0	28.5	26.5	8.2	14.0	1.0~3.5	250
FF-7	5.0	12.7	12.0	4.4	8.5	1.0~2.0	1000
FF-8		15.7	15.0	4.4	8.5		
FF-9	8.0	20.0	18.6	4.0	7.0	1.0~2.5	500
FF-10		23.8	22.0	5.0	10.0		
FF-11	10.0	31.5	28.5	7.8	13.6	1.0~3.5	250
FF-12	8.0	20.0	18.0	15.0	20.8	1.0~3.0	
FF-13		20.0	18.0	18.0	24.3	0.8~1.0	
FF-14		19.5	18.7	5.0	10.5	0.8~2.0	
FF-16	10.0	29.4	26.5	15.0	23.0	1.0~3.5	100
FF-21	8.0	20.0	19.3	20.5	25.6	0.8~2.0	250
FF-22		19.2	17.2	7.9	12.1	0.8~1.2	500
FF-24		23.0	21.0	8.0	13.3	0.8~2.0	250
FF-25		24.0	20.0	10.5	15.8		
FF-26		22.0	21.0	3.5	10.5	1.0~3.0	500
FF-27		26.7	24.8	16.0	21.0		
FF-28		20.0	18.0	10.0	13.5		
FF-31		10.0	27.0	26.0	6.9	12.0	0.8~2.0
FF-35	6.0	14.0	12.7	5.8	10.6	1.0~2.5	1000
FF-36	8.0	22.0	20.0	3.5	10.5	1.0~3.0	500
FF-41	8.0	20.8	19.8	7.2	12.6	1.0~2.5	500
FF-43	5.0	12.0	10.5	5.8	10.0	1.0~2.5	1000
FF-44	8.0	20.8	19.8	6.9	11.8	1.0~3.4	500

PLASTIC FOOT



- ◆ MATERIAL:TPE
- ◆ PIN MATERIAL:NYLON 66 (UL)94V-2
- ◆ COLOR:BLACK
- ◆ UNIT:mm

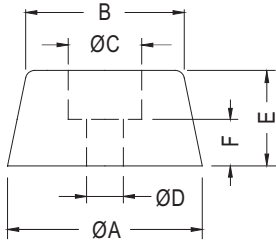


CHASSIS Ø4
THICKNESS 0.8~1

PART NO	PACKAGE
FF-15	1000

PLASTIC FOOT

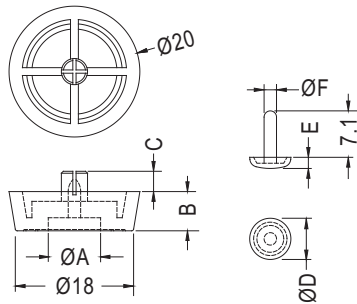
- ◆ MATERIAL:P.V.C/RUBBER/PP
- ◆ COLOR:BLACK/WHITE
- ◆ UNIT:mm



PART NO	A	B	C	D	E	F	MATERIAL	PACKAGE
NF-001	14.8	8.0	6.0	3.0	7.0	3.1	P.V.C	1000
NF-002	11.5	8.7	5.6	3.2	7.4	3.3	RUBBER	
NF-004	16.0	13.0	6.0	3.0	7.8	4.0		
NF-005	17.2	16.2	9.0	4.0	7.0	3.0		
NF-006	20.2	18.4	10.0	3.0	8.0	4.0	P.V.C	500
NF-007	25.0	21.5	8.5	3.3	5.8	2.8		
NF-008	20.0	15.0	9.8	3.0	10.5	5.0		
NF-008A	20.0	15.0	9.8	4.0	10.5	5.0		
NF-009	11.0	8.8	6.0	3.5	5.7	2.3	PP	1000
NF-014	28.0	21.2	9.7	3.8	20.0	6.0	P.V.C	100
NF-018	28.0	24.0	9.7	4.2	25.0	6.0	RUBBER	
NF-020	20.2	18.0	9.4	3.5	15.0	4.0	RUBBER	

PLASTIC FOOT

- ◆ FOOT MATERIAL:PE
- ◆ PIN MATERIAL:NYLON 66 (UL)94V-2
- ◆ COLOR:BLACK
- ◆ UNIT:mm

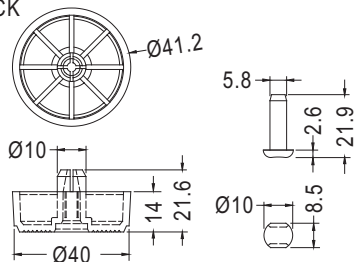


CHASSIS ØG
THICKNESS 0.8

PART NO	A	B	C	D	E	F	G	PACKAGE
FF-19	8.0	6.0	3.1	6.3	1.7	1.9	4.0	1000
FF-20	9.0	5.2	3.2	7.8	1.9	2.45	5.0	

PLASTIC FOOT

- ◆ MATERIAL:PP
- ◆ PIN MATERIAL:PP
- ◆ FLAME CLASS :94HB
- ◆ COLOR:BLACK
- ◆ UNIT:mm



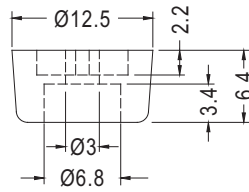
CHASSIS Ø10
THICKNESS 0.8~2.0

PART NO	PACKAGE
FF-34	100

PLASTIC FOOT



- ◆ FOOT MATERIAL:TPE
- ◆ COLOR:BLACK
- ◆ UNIT:mm

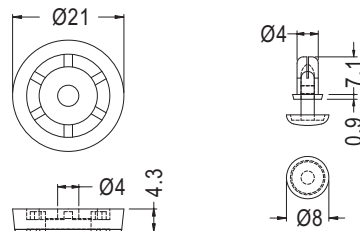


PART NO	PACKAGE
FF-37	1000

PLASTIC FOOT



- ◆ FOOT MATERIAL:TPE
- ◆ PIN MATERIAL:NYLON 66 (UL)94V-2
- ◆ COLOR:BLACK
- ◆ UNIT:mm



BODY

SNAP RIVET

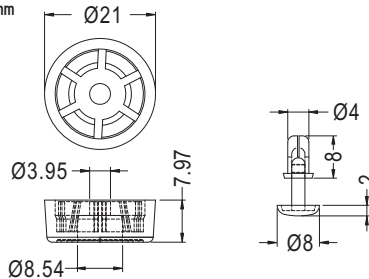
◆不同板厚配合SR4系列铆钉使用

PART NO	PACKAGE
FF-40	1000

PLASTIC FOOT



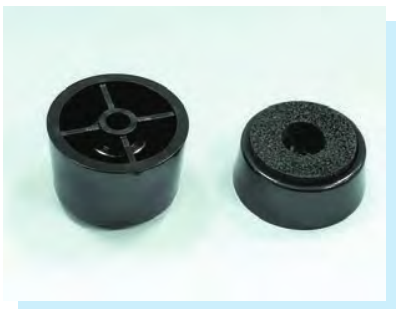
- ◆ FOOT MATERIAL:TPR (UL)94V-0
- ◆ PIN MATERIAL:NYLON 66 (UL)94V-2
- ◆ COLOR:BLACK
- ◆ UNIT:mm



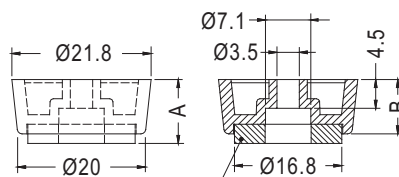
HOLE Ø4.1~Ø4.2 THICKNESS 0.8~2.0

PART NO	PACKAGE
FF-46	1000

PLASTIC FOOT



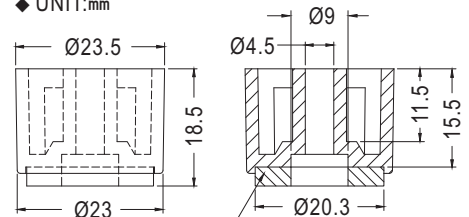
- ◆ MATERIAL:ABS
- ◆ COLOR:BLACK
- ◆ UNIT:mm



EVA FOAM OR SILICON (T4000 TAPE)

PART NO	A	B	PACKAGE
FFS-1	10.0	8.5	500
FFS-2	15.0	13.5	

- ◆ MATERIAL:ABS (UL)
- ◆ FLAME CLASS:94HB
- ◆ COLOR:BLACK
- ◆ UNIT:mm



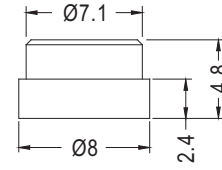
EVA FOAM OR SILICON (T4000 TAPE)

PART NO	PACKAGE
FFS-5	500

PLASTIC FOOT



- ◆ MATERIAL:RUBBER
- ◆ COLOR:BLACK
- ◆ UNIT:mm



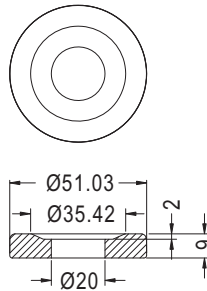
MOUNTING HOLE Ø7

PART NO	PACKAGE
TF-017	1000

RUBBER FOOT



- ◆ MATERIAL:RUBBER
- ◆ COLOR:BLACK
- ◆ UNIT:mm

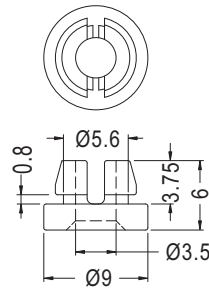


PART NO	PACKAGE
TF-448	500

RUBBER FOOT



- ◆ MATERIAL:SILICON RUBBER (UL)
- ◆ FLAME CLASS:94V-0
- ◆ COLOR:BLACK
- ◆ UNIT:mm

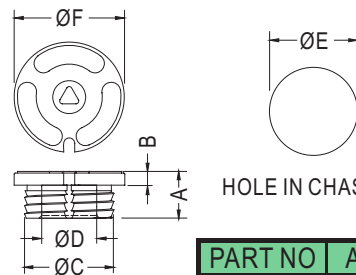


PART NO	PACKAGE
TF-561IV0	1000

PLASTIC FOOT



- ◆ MATERIAL:TPR
- ◆ COLOR:BLACK
- ◆ UNIT:mm



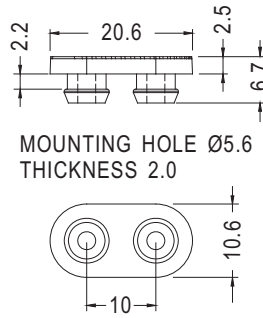
HOLE IN CHASSIS

PART NO	A	B	C	D	E	F	PACKAGE
TFF-1	9.0	3.0	16.3	10.0	16.0	20.0	1000
TFF-2	8.5	2.5	16.3	10.0	16.0	20.0	
TFF-3	9.0	2.4	20.2	13.5	19.8	22.8	
TFF-5	7.5	2.5	16.3	10.0	16.0	20.0	

FOOT



- ◆ MATERIAL:TPR
- ◆ COLOR:BLACK
- ◆ UNIT:mm

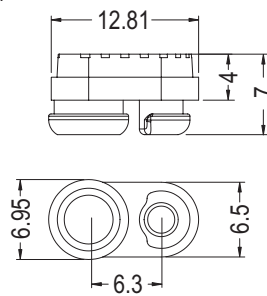


PART NO	PACKAGE
TNFF-1	1000

FOOT



- ◆ MATERIAL:TPR
- ◆ COLOR:BLACK/GRAY
- ◆ UNIT:mm

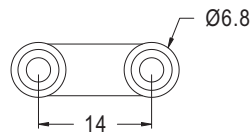
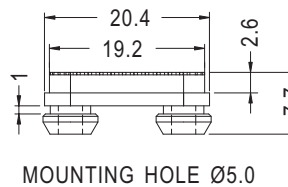


PART NO	PACKAGE
TNFF-2	1000

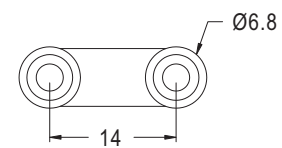
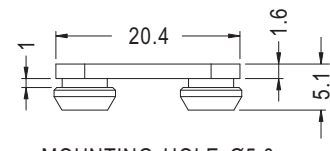
FOOT



- ◆ MATERIAL:TPR
- ◆ COLOR:BLACK
- ◆ UNIT:mm



PART NO	PACKAGE
TNFF-3	1000

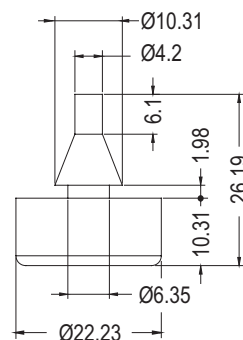


PART NO	PACKAGE
TNFF-4	1000

RUBBER FOOT



- ◆ MATERIAL:NEOPRENE
- ◆ COLOR:BLACK
- ◆ UNIT:mm

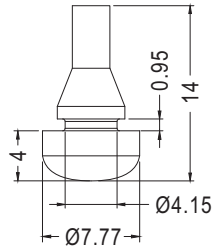


PART NO	PACKAGE
TNF-15	2000

RUBBER FOOT



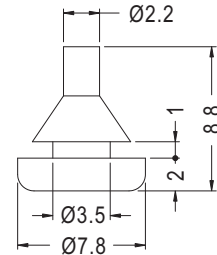
- ◆ MATERIAL: SILICON RUBBER (UL)
- ◆ FLAME CLASS: 94HB
- ◆ COLOR: BLACK/GRAY
- ◆ UNIT: mm



PART NO	PACKAGE
TF-041I	1000



- ◆ MATERIAL: EPDM
- ◆ COLOR: BLACK
- ◆ UNIT: mm

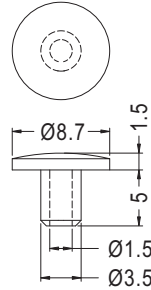


PART NO	PACKAGE
TF-546EP	1000

RUBBER FOOT



- ◆ MATERIAL: RUBBER
- ◆ COLOR: BLACK
- ◆ UNIT: mm

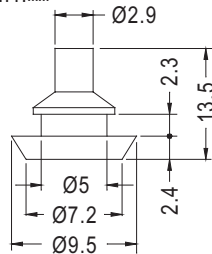


PART NO	PACKAGE
TF-283	1000

RUBBER FOOT

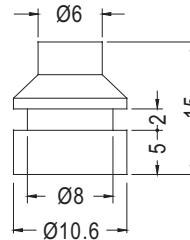


- ◆ MATERIAL: RUBBER
- ◆ COLOR: BLACK
- ◆ UNIT: mm



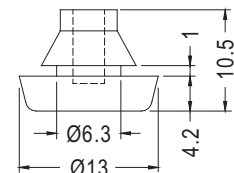
MOUNTING HOLE $\varnothing 5.2$

PART NO	PACKAGE
TNF-1	1000



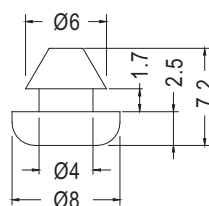
MOUNTING HOLE $\varnothing 8.2$

PART NO	PACKAGE
TNF-2	1000



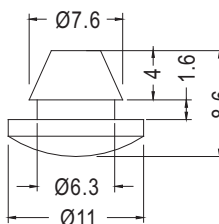
MOUNTING HOLE $\varnothing 6.35$

PART NO	PACKAGE
TNF-3	1000



MOUNTING HOLE $\varnothing 4.2$

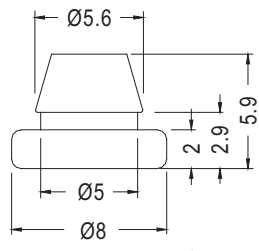
PART NO	PACKAGE
TNF-5	1000



MOUNTING HOLE $\varnothing 6.5$

PART NO	PACKAGE
TNF-6	2000

- ◆ MATERIAL: SILICON (UL)
- ◆ FLAME CLASS: 94HB/94V-0

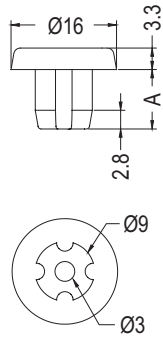


MOUNTING HOLE $\varnothing 4.5-5.0$
THICKNESS 0.8~1.0

PART NO	PACKAGE
TNF-7	2000

RUBBER FOOT

- ◆ MATERIAL:RUBBER
- ◆ COLOR:BLACK
- ◆ UNIT:mm

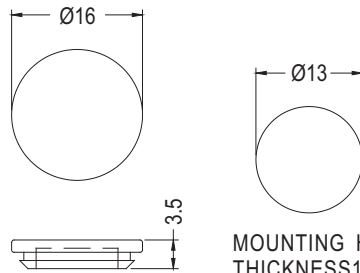


PART NO	A	PACKAGE
TNF-9	9.0	2000
★ TNF-19	6.5	

MOUNTING HOLE Ø8.3~8.5

FOOT

- ◆ MATERIAL:TPE
- ◆ COLOR:BLACK
- ◆ UNIT:mm

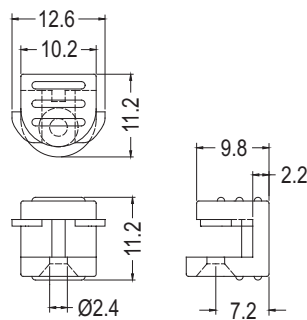


MOUNTING HOLE THICKNESS1.0

PART NO	PACKAGE
CDELT-6	1000

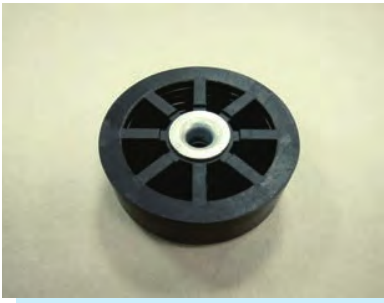
RUBBER FOOT

- ◆ MATERIAL:TPE
- ◆ COLOR:BLACK
- ◆ UNIT:mm

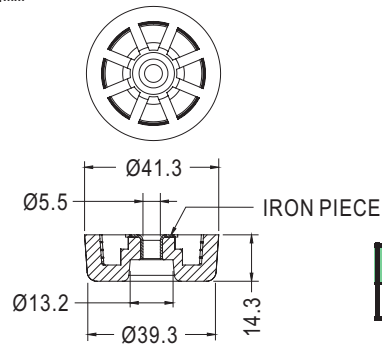


PART NO	PACKAGE
DELT-21	1000

FOOT



- ◆ HOUSING MATERIAL:TPR
- ◆ COLOR:BLACK
- ◆ UNIT:mm

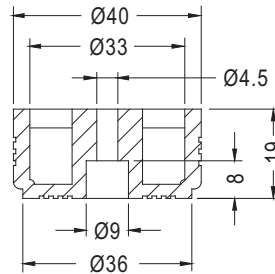


PART NO	IRON PIECE	PACKAGE
FFR-1	STEEL	50

FOOT

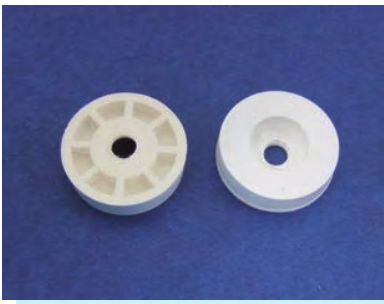


- ◆ MATERIAL:TPU
- ◆ COLOR:BLACK
- ◆ UNIT:mm

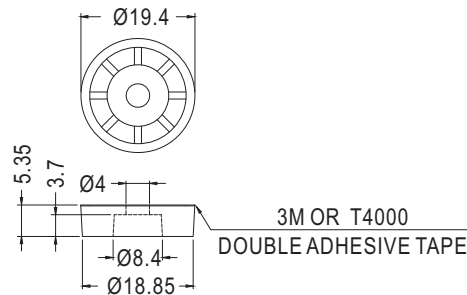


PART NO	PACKAGE
FFP-40	50

RUBBER FOOT



- ◆ MATERIAL:RUBBER
- ◆ COLOR:BLACK/WHITE
- ◆ UNIT:mm

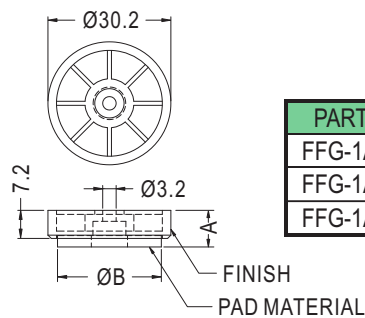


PART NO	PACKAGE
TF-605	1000

SILVER PLATED FOOT



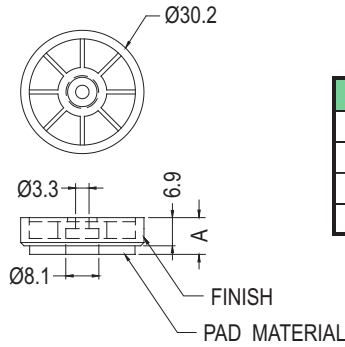
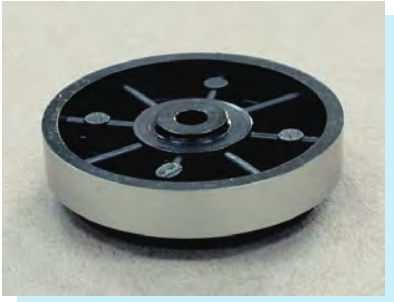
- ◆ MATERIAL:ABS (UL)
- ◆ FLAME CLASS:94HB
- ◆ COLOR:BLACK
- ◆ UNIT:mm



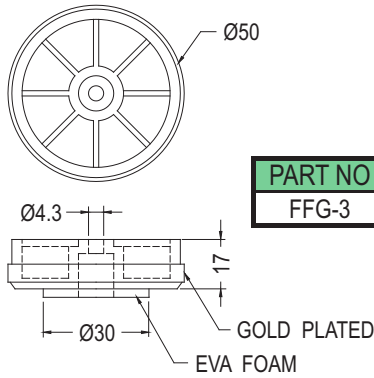
PART NO	A	B	PAD MATERIAL	FINISH
FFG-1A	9.1	25.8	EVA	SILVER PLATED
FFG-1A(N)	9.1	25.0	EVA	
FFG-1A(RU)	8.2	24.5	RUBBER	SILVER PLATED

GOLD PLATED FOOT

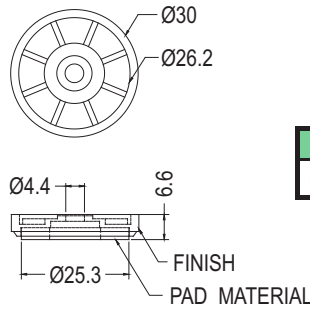
- ◆ HOUSING MATERIAL:ABS
- ◆ COLOR:BLACK
- ◆ UNIT:mm



PART NO	A	PAD MATERIAL	FINISH
FFG-1	9.0	EVA	SILVER PLATED
FFG-1(RU)	8.0	RUBBER	SILVER PLATED
FFG-1G(RU)			GOLD PLATED
FFG-1N*			SILVER PLATED



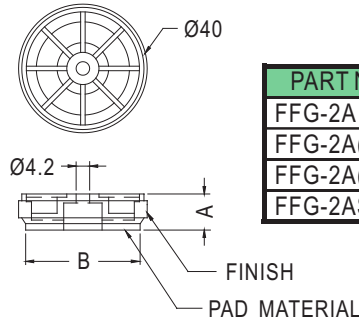
PART NO
FFG-3



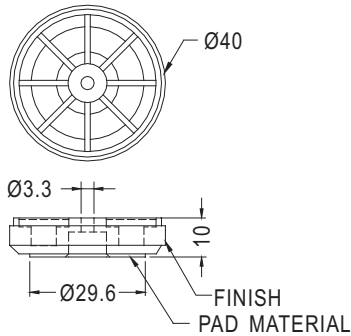
PART NO	PAD MATERIAL	FINISH
FFG-30(S)	EVA	SILVER PLATED

GOLD PLATED FOOT

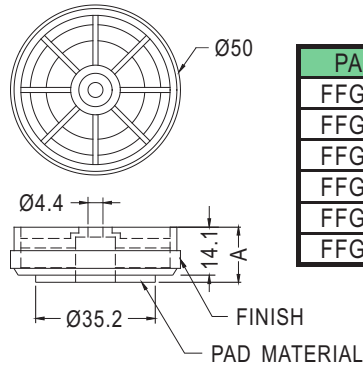
- ◆ HOUSING MATERIAL:ABS
- ◆ COLOR:BLACK
- ◆ UNIT:mm



PART NO	A	B	PAD MATERIAL	FINISH
FFG-2A	10.8	35.5	EVA	GOLD PLATED
FFG-2A(RU)	10.2		RUBBER	
FFG-2A(S)	11.0	35.0	EVA	SILVER PLATED
FFG-2AS(RU)	10.2	35.5	RUBBER	



PART NO	PAD MATERIAL	FINISH
FFG-2N	RUBBER	
FFG-2(S)		SILVER PLATED

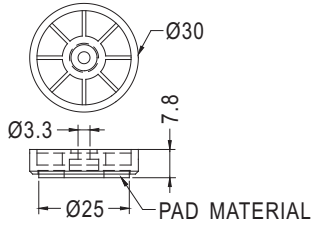


PART NO	A	PAD MATERIAL	FINISH
FFG-3A	16.2	EVA	GOLD PLATED
FFG-3A(RU)	15.4	RUBBER	
FFG-3A(S)	16.0	EVA	SILVER PLATED
FFG-3A(G)N			
FFG-3AN	16.2	EVA	
FFG-3AN(RU)	15.4	RUBBER	

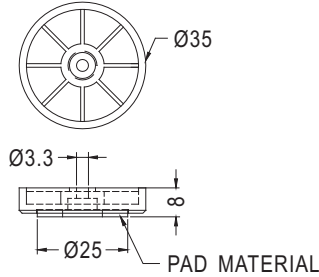
PLASTIC FOOT



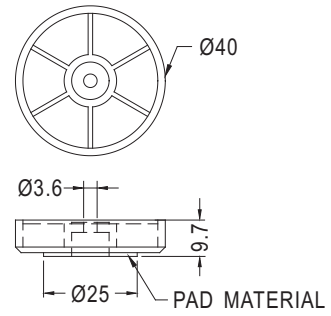
- ◆ HOUSING MATERIAL:ABS
- ◆ COLOR:BLACK
- ◆ UNIT:mm
- ◆ FFK RANGE: Without any silver/gold plated



PART NO	PAD MATERIAL
FFK-1	EVA
FFK-1P	PORON
FFK-1(RU)	RUBBER



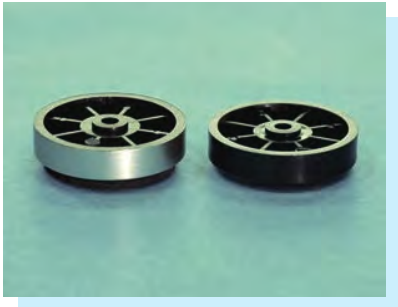
PART NO	PAD MATERIAL
FFK-3	EVA
FFK-3P	PORON
FFK-3(RU)	RUBBER



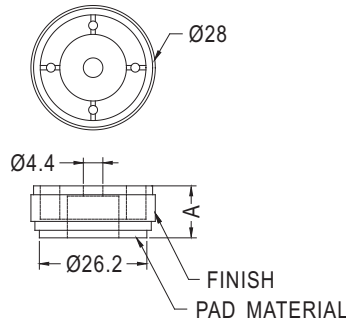
ONLY FOR : FFK-4P外部霧面處理

PART NO	PAD MATERIAL
FFK-2	EVA
FFK-2P	PORON
FFK-2(RU)	RUBBER
FFK-4P	PORON

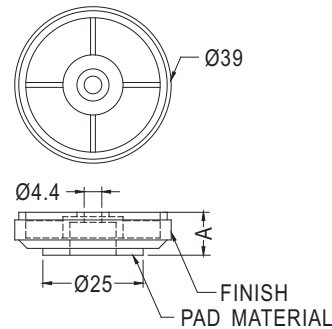
GOLD PLATED FOOT



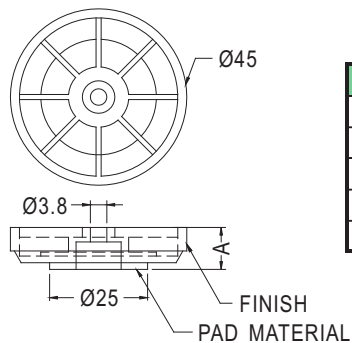
- ◆ HOUSING MATERIAL:ABS
- ◆ COLOR:BLACK
- ◆ UNIT:mm



PART NO	A	PAD MATERIAL	FINISH
RS-28	11.7	EVA	GOLD PLATED
RS-28(S)			SILVER PLATED
RS-28S(RU)	10.7	RUBBER	
RS-28N(RU)			
RS-28(N)N	10.0		



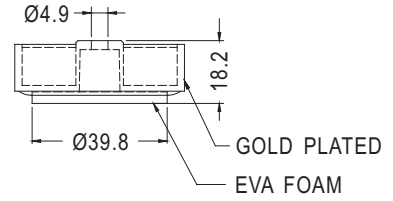
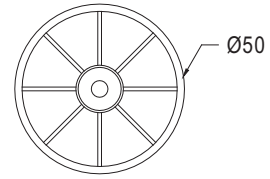
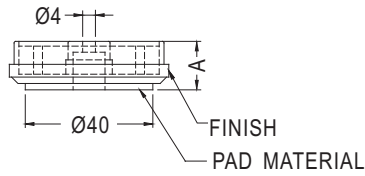
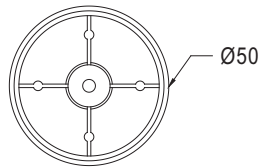
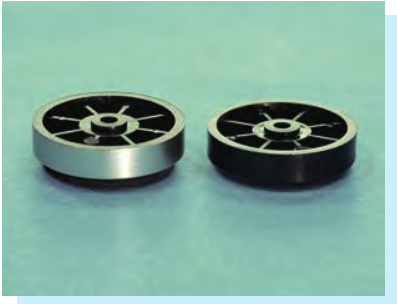
PART NO	A	PAD MATERIAL	FINISH
RS-40	10.7	EVA	GOLD PLATED
RS-40(S)			SILVER PLATED
RS-40S(RU)	9.8	RUBBER	



PART NO	A	PAD MATERIAL	FINISH
RS-45	10.7	EVA	GOLD PLATED
RS-45(S)			SILVER PLATED
RS-45(RU)	9.7	RUBBER	GOLD PLATED
RS-45S(RU)			SILICON RUBBER

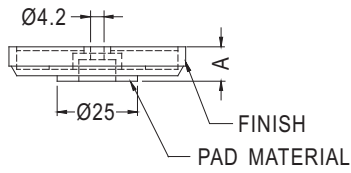
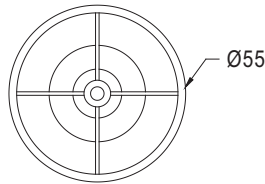
GOLD PLATED FOOT

- ◆ HOUSING MATERIAL:ABS
- ◆ COLOR:BLACK
- ◆ UNIT:mm

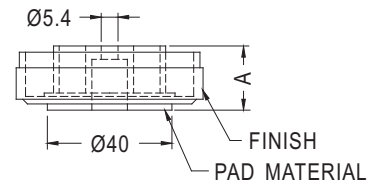
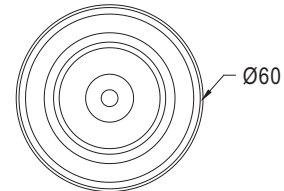


PART NO	A	PAD MATERIAL	FINISH
RS-50	14.8	EVA	GOLD PLATED
RS-50(RU)	14.0	RUBBER	
RS-50N	14.8	EVA	SILVER PLATED
RS-50N(RU)	14.0	RUBBER	
RS-50(S)	14.8	EVA	SILVER PLATED
RS-50S(RU)	14.0	RUBBER	

PART NO
RS-50-2



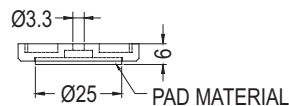
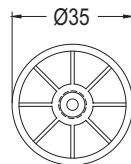
PART NO	A	PAD MATERIAL	FINISH
RS-55	10.7	EVA	GOLD PLATED
RS-55(S)			SILVER PLATED
RS-55S(RU)	9.7	RUBBER	SILVER PLATED



PART NO	A	PAD MATERIAL	FINISH
RS-60N	20.0	EVA	GOLD PLATED
RS-60			
RS-60(BK)			
RS-60(S)			SILVER PLATED
RS-60(S)RU	RUBBER		

PLASTIC FOOT

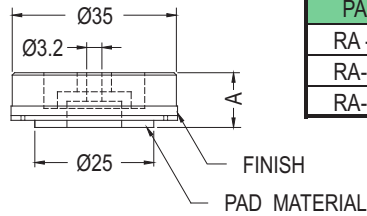
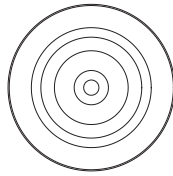
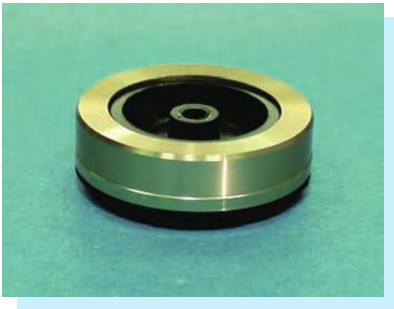
- ◆ HOUSING MATERIAL:ABS (UL)
- ◆ HOUSING FLAME CLASS:94HB
- ◆ COLOR:BLACK
- ◆ UNIT:mm



PART NO	PAD MATERIAL
FFK-5	RUBBER

GOLD PLATED FOOT

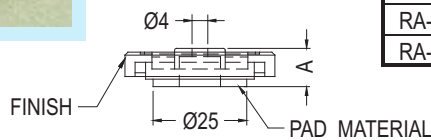
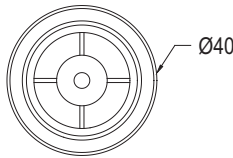
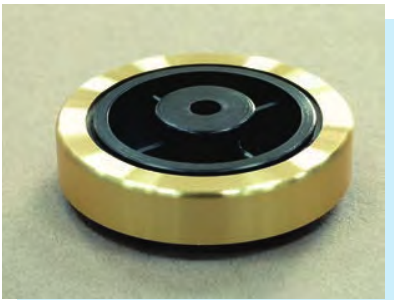
- ◆ HOUSING MATERIAL:ABS
- ◆ METAL MATERIAL:AL
- ◆ COLOR:BLACK
- ◆ UNIT:mm



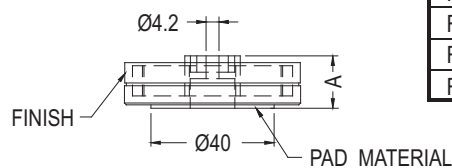
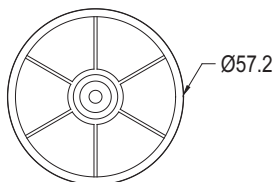
PART NO	A	PAD MATERIAL	FINISH
RA -35	11.5	EVA	GOLD PLATED
RA-35(S)			SILVER PLATED
RA-35(S)RU	10.5	RUBBER	SILVER PLATED

GOLD PLATED FOOT

- ◆ HOUSING MATERIAL:ABS
- ◆ METAL MATERIAL:AL
- ◆ COLOR:BLACK
- ◆ UNIT:mm



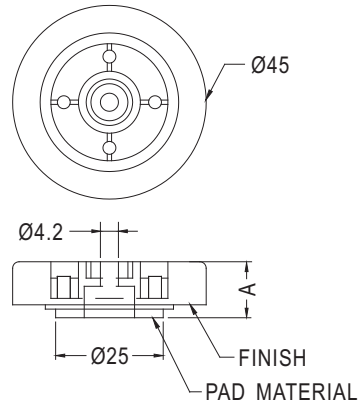
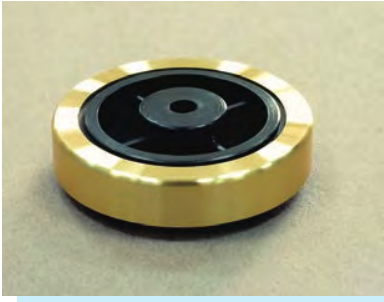
PART NO	A	PAD MATERIAL	FINISH
RA -40	12.0	EVA	GOLD PLATED
RA-40(RU)	11.0	RUBBER	
RA-40(S)	12.0	EVA	SILVER PLATED
RA-40S(RU)	11.0	RUBBER	
RA-40(K)	12.0	EVA	CHAMPAGNE COLOR



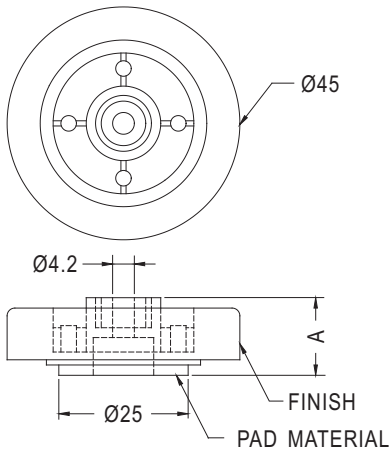
PART NO	A	PAD MATERIAL	FINISH
RA-57	17.0	EVA	GOLD PLATED
RA-57(RU)	17.1	RUBBER	
RA-57(S)	17.0	EVA	SILVER PLATED
RA-57S(RU)	17.1	RUBBER	

GOLD PLATED FOOT

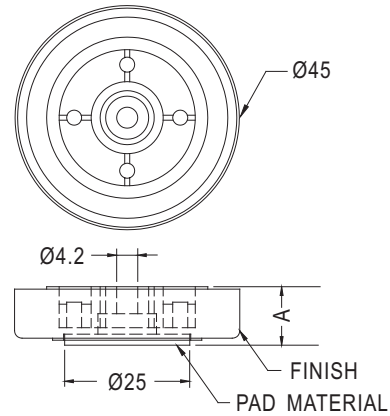
- ◆ HOUSING MATERIAL:ABS
- ◆ METAL MATERIAL:AL
- ◆ COLOR:BLACK
- ◆ UNIT:mm



PART NO	A	PAD MATERIAL	FINISH
RA-45S-1	12.5	EVA	SILVER PLATED
RA-45-1(RU)	11.5	RUBBER	GOLD PLATED
RA45S-1(RU)			SILVER PLATED



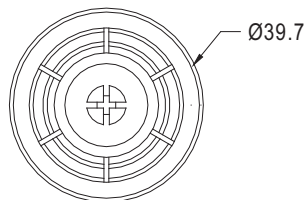
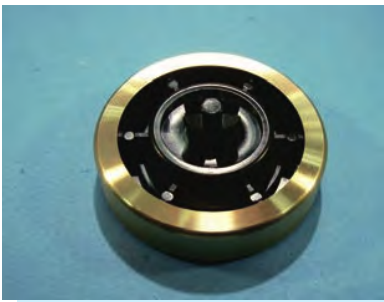
PART NO	A	PAD MATERIAL	FINISH
RA-45	15.0	EVA	GOLD PLATED
RA-45(S)			
RA-45(RUS)	14.0	RUBBER	SILVER PLATED
RA-45S(RU)	14.1	RUBBER	
RA-45(S)I		SILICON RUBBER	



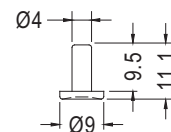
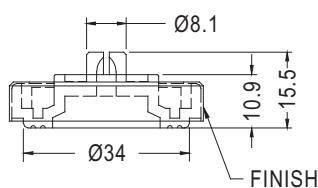
PART NO	A	PAD MATERIAL	FINISH
RA-45S-3	12.5	EVA	SILVER PLATED

GOLD PLATED FOOT

- ◆ FOOT MATERIAL:PE
- ◆ PIN MATERIAL:PP
- ◆ METAL MATERIAL:AL
- ◆ COLOR:BLACK
- ◆ UNIT:mm



PART NO	FINISH
RAFF-40	GOLD PLATED
RAFF-40(S)	SILVER PLATED
RAFF-40(B)	BLACK PLATED

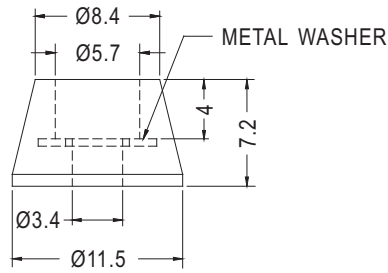


MOUNTING HOLE Ø8

RUBBER FOOT



- ◆ MATERIAL:RUBBER
- ◆ COLOR:BLACK
- ◆ UNIT:mm

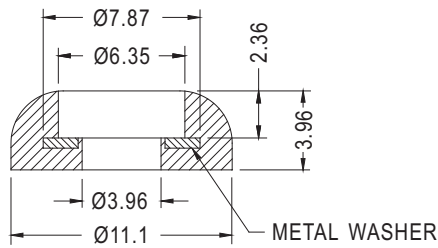


PART NO	PACKAGE
NF-002ST	1000

RUBBER FOOT



- ◆ MATERIAL:RUBBER
- ◆ COLOR:BLACK
- ◆ UNIT:mm

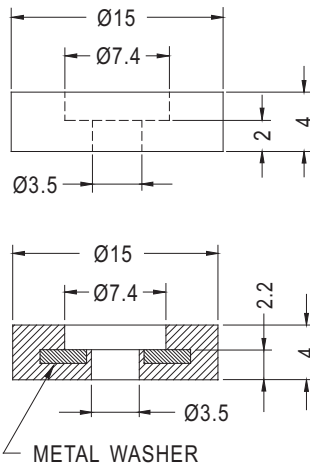


PART NO	PACKAGE
NF-011ST	1000

RUBBER FOOT



- ◆ MATERIAL:RUBBER
- ◆ COLOR:BLACK
- ◆ UNIT:mm



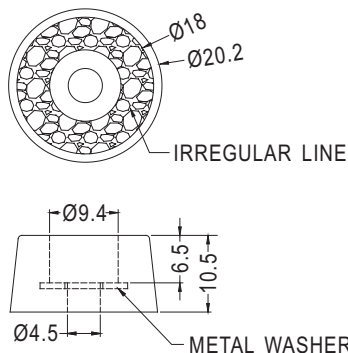
PART NO	PACKAGE
NF-012	1000

PART NO	PACKAGE
NF-012ST	1000

RUBBER FOOT



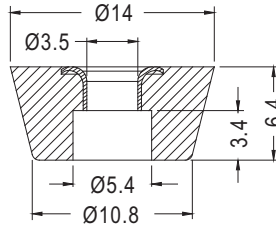
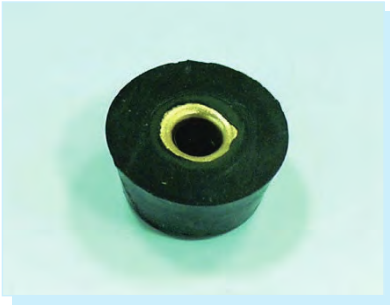
- ◆ MATERIAL:RUBBER
- ◆ COLOR:BLACK
- ◆ UNIT:mm



PART NO	PACKAGE
NF-015ST	1000

RUBBER FOOT

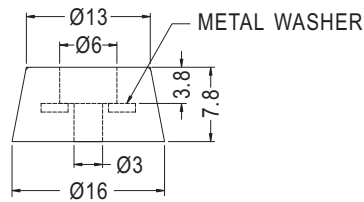
- ◆ MATERIAL:RUBBER
- ◆ METAL RING MATERIAL:BRONZE
- ◆ COLOR:BLACK
- ◆ UNIT:mm



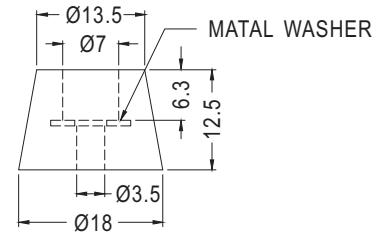
PART NO	PACKAGE
NF-016ST	1000

RUBBER FOOT

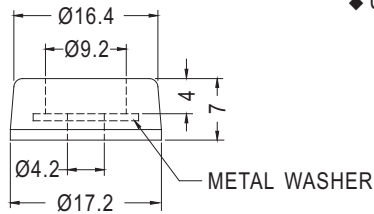
- ◆ MATERIAL:RUBBER
- ◆ COLOR:BLACK
- ◆ UNIT:mm



PART NO	PACKAGE
NF-004ST	1000

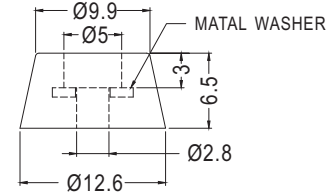


PART NO	PACKAGE
NF-039ST	1000



PART NO
NF-005ST

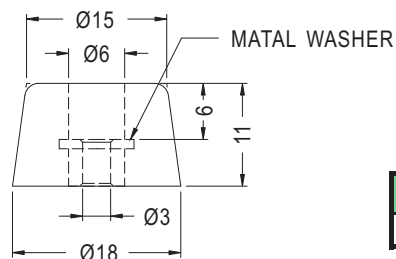
- ◆ MATERIAL:SILICON RUBBER (UL)
- ◆ FLAME CLASS:94HB
- ◆ COLOR:BLACK
- ◆ UNIT:mm



PART NO	PACKAGE
NF-030IST	1000

RUBBER FOOT

- ◆ MATERIAL:NEOPRENE (UL)
- ◆ FLAME CLASS:94V-0
- ◆ COLOR:BLACK
- ◆ UNIT:mm

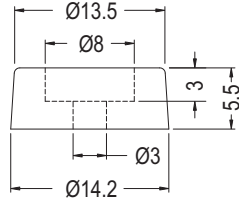


PART NO	PACKAGE
NF-035NPST	1000

FOOT

NEW

- ◆ MATERIAL:TPE
- ◆ COLOR:BLACK
- ◆ UNIT:mm

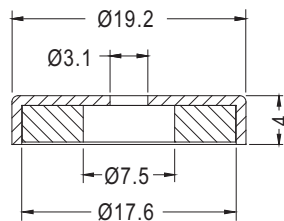


PART NO	PACKAGE
NF-031(TPE)	1000

MAGNET PLASTIC FOOT

HUB

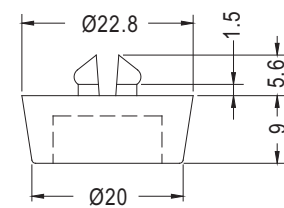
- ◆ METAL COVER MATERIAL:STEEL
- ◆ METAL COVER COLOR
- ◆ MAGNET MATERIAL
- ◆ MAGNET COLOR:BLACK
- ◆ UNIT:mm



PART NO	PACKAGE
MGFF-1	500

PLASTIC FOOT

- ◆ MATERIAL:PE
- ◆ COLOR:BLACK
- ◆ UNIT:mm

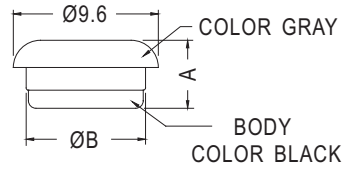


MOUNTING HOLE Ø8

PART NO	PACKAGE
GL-4	500

PLASTIC FOOT

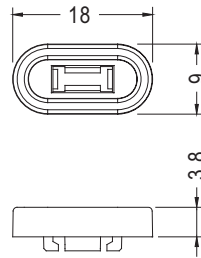
- ◆ MATERIAL: SILICON RUBBER
- ◆ BODY MATERIAL: NYLON 66(UL)
- ◆ FLAME CLASS: 94V-2
- ◆ COLOR: BLACK/GRAY
- ◆ UNIT: mm
- ◆ (P.A.T)



PART NO	A	B	PACKAGE
FFDA-9AY	4.5	7.92	2000
FFDA-10AY	4.55	8.0	

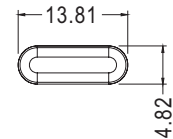
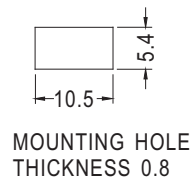
PLASTIC FOOT

- ◆ MATERIAL: ABS UL94HB/TPR
- ◆ COLOR: BLACK/WHITE
- ◆ UNIT: mm



ASFF-1A

PART NO	PACKAGE
ASFF-1A	1000

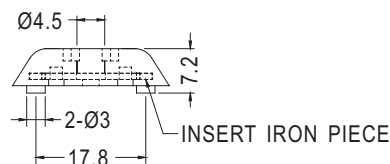
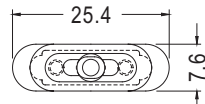


ASFF-1B

PART NO	PACKAGE
ASFF-1B	1000

FOOT

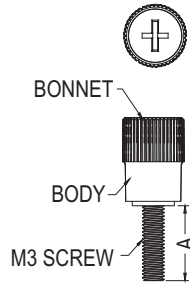
- ◆ MATERIAL: TPR
- ◆ METAL RING MATERIAL: SPCC
- ◆ COLOR: GRAY
- ◆ UNIT: mm



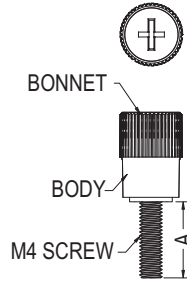
PART NO	PACKAGE
TF-356	1000

HAND SPIN SCREW

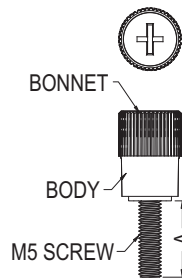
- ◆ MATERIAL: NYLON 66 (UL)
- ◆ FLAME CLASS: 94V-2
- ◆ COLOR: BLACK
- ◆ UNIT: mm
- ◆ (P.A.T)



PART NO	A	PACKAGE
HASW3-8	5	1000
★ HASW3-9	6	
HASW3-13	10	
HASW3-18	15	
HASW3-23	20	
HASW3-28	25	
HASW3-33	30	



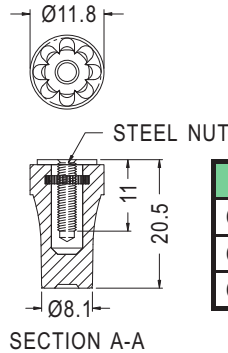
PART NO	A	PACKAGE
HASW4-8	5	1000
HASW4-13	10	
HASW4-18	15	
HASW4-23	20	
HASW4-28	25	
HASW4-33	30	



PART NO	A	PACKAGE
HASW5-10	7	1000
HASW5-15	12	
HASW5-20	17	
HASW5-25	22	
HASW5-30	27	
HASW5-35	32	
HASW5-40	37	
HASW5-45	42	
HASW5-50	47	

HAND SPIN NUT

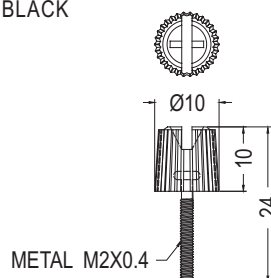
- ◆ MATERIAL: PC+ABS (UL)
- ◆ FLAME CLASS: 94V-2
- ◆ COLOR: BLACK
- ◆ UNIT: mm



PART NO	NUT	PACKAGE
GPM3-20	M3X0.5P	1000
GPM4-20	M4X0.7P	
GPM632-20	6-32 UNC	

SCREW

- ◆ HEAD MATERIAL: PC+ABS (UL)
- ◆ HEAD FLAME CLASS: 94V-0/94V-2
- ◆ COLOR: BLACK
- ◆ UNIT: mm

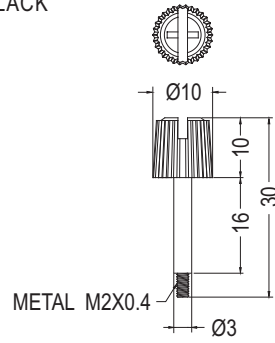


PART NO	PACKAGE
GPE2-24	1000

SCREW



- ◆ HEAD MATERIAL:PC+ABS (UL)
- ◆ HEAD FLAME CLASS:94V-0/94V-2
- ◆ COLOR:BLACK
- ◆ UNIT:mm

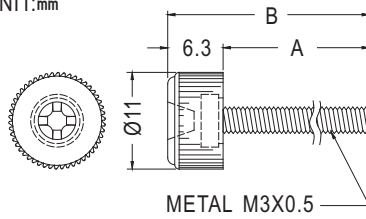


PART NO	PACKAGE
GPE2-30	1000

SCREW



- ◆ HEAD MATERIAL:PC+ABS (UL)
- ◆ HEAD FLAME CLASS:94V-0/94V-2
- ◆ COLOR:BLACK
- ◆ UNIT:mm

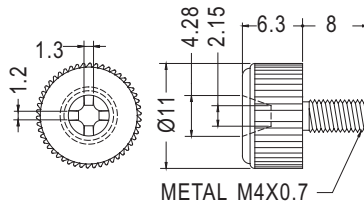


PART NO	A	B	PACKAGE
★ GPE3-5.5	5.5	11.8	1000
GPE3-8	8.0	14.3	
GPE3-15	15.0	21.3	
GPE3-23	23.0	29.3	

SCREW



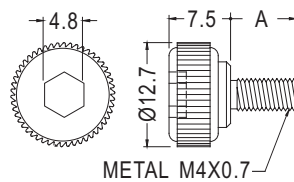
- ◆ HEAD MATERIAL:PC+ABS (UL)94V-0
- ◆ COLOR:NATURAL/BLACK
- ◆ UNIT:mm



PART NO	PACKAGE
GPE4-8	500



- ◆ HEAD MATERIAL:ABS(UL)94HB
- ◆ COLOR:NATURAL/BLACK
- ◆ UNIT:mm

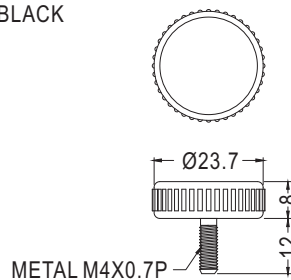


PART NO	A	PACKAGE
GPE4-8L	8.0	500
GPE4-12L	12.0	

SCREW



- ◆ HEAD MATERIAL:PP (UL)
- ◆ HEAD FLAME CLASS:94HB
- ◆ COLOR:BLACK
- ◆ UNIT:mm

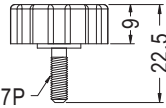
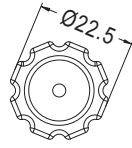


PART NO	PACKAGE
GPE4-12-1	1000

SCREW



- ◆ HEAD MATERIAL:ABS (UL)
- ◆ HEAD FLAME CLASS:94V-0
- ◆ COLOR:BLACK/DARK GRAY
- ◆ UNIT:mm



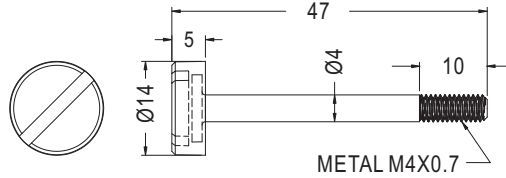
METAL M4X0.7P

PART NO	PACKAGE
GPE4-13.5	1000

SCREW



- ◆ HEAD MATERIAL:NYLON 66 (UL)
- ◆ HEAD FLAME CLASS :94V-2
- ◆ COLOR:BLACK/WHITE
- ◆ UNIT:mm



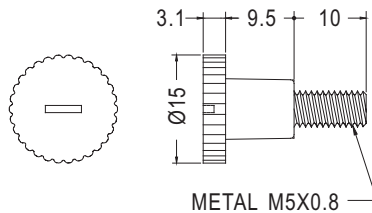
METAL M4X0.7

PART NO	PACKAGE
GPE4-42	1000

SCREW



- ◆ HEAD MATERIAL:ABS (UL)94HB
- ◆ COLOR:BLACK
- ◆ UNIT:mm



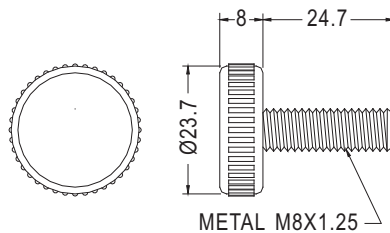
METAL M5X0.8

PART NO	PACKAGE
GPE5-20	500

SCREW PLASTIC FOOT



- ◆ HEAD MATERIAL:PP
- ◆ COLOR : BLACK
- ◆ UNIT:mm



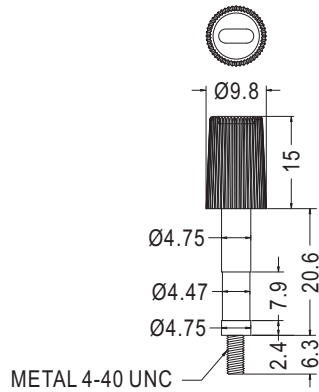
METAL M8X1.25

PART NO	PACKAGE
GPE8-32	1000

SCREW



- ◆ HEAD MATERIAL:PC (UL)
- ◆ HEAD FLAME CLASS :94V-2
- ◆ COLOR:BLACK
- ◆ UNIT:mm

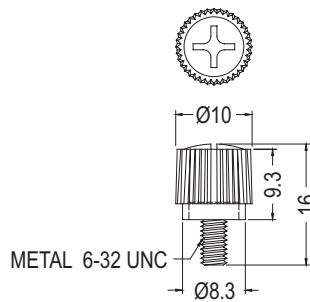


PART NO	PACKAGE
GPE44-1	500

SCREW



- ◆ HEAD MATERIAL:PP
- ◆ COLOR:BLACK/COMPUTER
- ◆ UNIT:mm

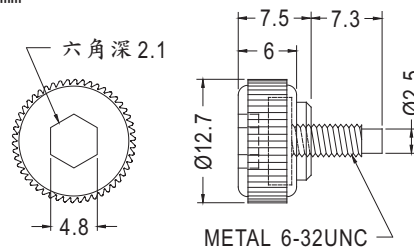


PART NO	PACKAGE
GPE632-6	1000

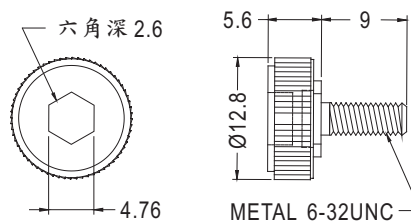
SCREW



- ◆ HEAD MATERIAL: ABS (UL)
- ◆ HEAD FLAME CLASS:94HB
- ◆ COLOR:NATURAL
- ◆ UNIT:mm



PART NO	PACKAGE
GPE632-5	1000



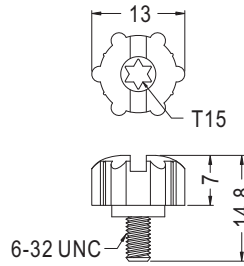
PART NO	PACKAGE
GPE632-9	1000

SCREW

NEW



- ◆ HEAD MATERIAL:ABS (UL)
- ◆ HEAD FLAME CLASS:94HB
- ◆ COLOR:BLUE
- ◆ UNIT:mm



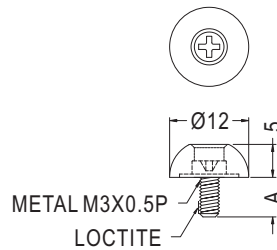
PART NO	PACKAGE
GPR632-6	500

SCREW

NEW



- ◆ HEAD MATERIAL:PC+ABS (UL)
- ◆ HEAD FLAME CLASS:94V-0
- ◆ COLOR:BLACK
- ◆ UNIT:mm

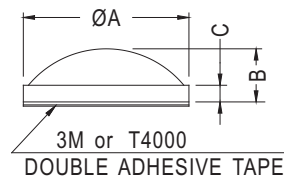


PART NO	A	PACKAGE
GPEA3-6	6.0	1000
GPEA3-8	8.0	

RUBBER FOOT



- ◆ MATERIAL:RUBBER
- ◆ COLOR:BLACK/GRAY/
COMPUTER/TRANSPARENT
- ◆ UNIT:mm
- ◆ OTHER MATERIALS AVAILABLE:
EPDM,SILICON,....

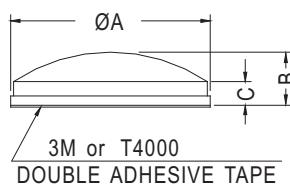


PART NO	A	B	C
RF-002	10.0	2.8	1.0
RF8-2A	8.0	2.0	
RF8-2.4A	8.0	2.4	
RF8-2.6A	8.0	2.6	

RUBBER FOOT



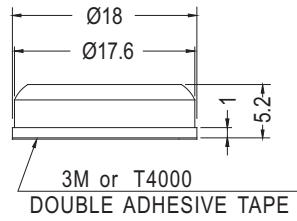
- ◆ MATERIAL:RUBBER
- ◆ COLOR:BLACK



PART NO	A	B	C
RF-004	9.9	3.8	2.8
RF14-5A	14.0	5.0	3.9
RF27-7AC-1	27.8	7.4	3.3

RUBBER FOOT

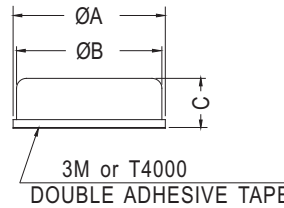
- ◆ MATERIAL:RUBBER
- ◆ COLOR:BLACK
- ◆ UNIT:mm



PART NO
RF18-5A

RUBBER FOOT

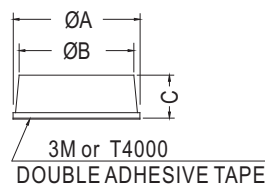
- ◆ MATERIAL:RUBBER
- ◆ COLOR:BLACK
- ◆ UNIT:mm



PART NO	A	B	C
RF9-3.5	9.0	8.2	3.5
RF8.2-5	8.2	7.6	5.0
RF8-3.5	8.0	8.2	3.5
RF15.5-5A	15.4	14.8	5.1
RF22.8-5	22.8	22.4	5.0
RF22-8.8	22.0	21.0	8.8
RF22-5	22.0	21.0	5.0

RUBBER FOOT

- ◆ MATERIAL:RUBBER
- ◆ COLOR:BLACK/GRAY/
COMPUTER
- ◆ UNIT:mm
- ◆ OTHER MATERIALS AVAILABLE:
EPDM,SILICON,....

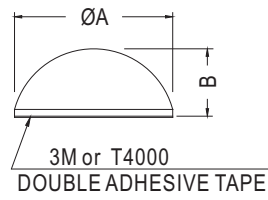


PART NO	A	B	C
RF6-5	6.0	5.0	5.0
RF-003	10.0	9.5	4.2
RF-030	10.0	9.5	8.0
RF-009	10.8	10.2	3.0
RF11-5	11.0	9.6	5.0
RF-011	11.0	10.5	5.0

PART NO	A	B	C
RF11-3.2A	11.3	10.7	3.2
RF12-27A	11.7	10.6	2.85
RF-039	11.9	11.2	6.4
RF-015	12.0	11.2	5.1
RF-019	12.0	9.5	4.0
RF-019A	12.7	10.0	3.8
RF-032	12.7	11.5	4.0
RF-005	13.0	11.4	5.0
RF-012	13.0	12.2	4.5
RF-007	19.0	17.0	7.2
RF-020	19.0	15.8	4.2
RF20-5	19.8	18.0	5.0
RF-008	20.0	19.0	6.0
RF24-8	24.0	20.0	8.0

RUBBER FOOT

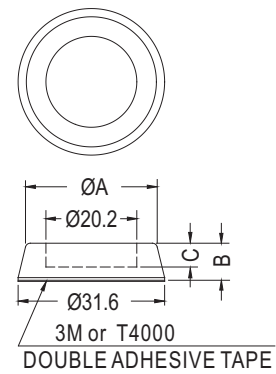
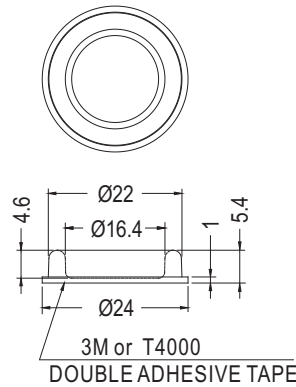
- ◆ MATERIAL: RUBBER
- ◆ COLOR: BLACK/GRAY
- ◆ UNIT: mm
- ◆ OTHER MATERIALS AVAILABLE: EPDM, SILICON,



PART NO	A	B
RF-021	6.7	4.2
RF-1106	11.0	6.0
RF-022	11.3	5.6
RF14-8A	14.0	8.0
RF-006	15.9	8.0
RF21-8.5	21.6	8.52
RF21-10	21.6	10.0

RUBBER FOOT

- ◆ MATERIAL: RUBBER
- ◆ COLOR: BLACK/GRAY/COMPUTER
- ◆ UNIT: mm



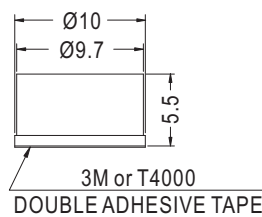
PART NO
RF-031

PART NO	A	B	C
RF-016	29.6	6.6	4.1
RF-017	29.0	8.8	4.9

RUBBER FOOT



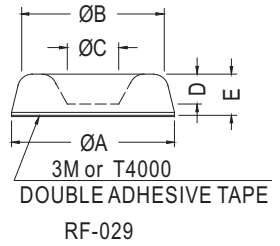
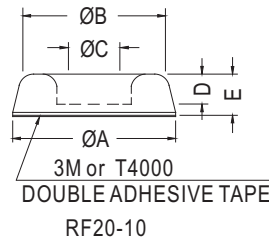
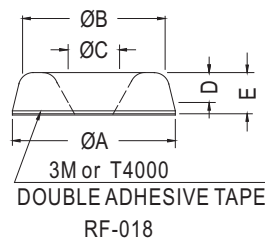
- ◆ MATERIAL: SILICON RUBBER (UL)
- ◆ FLAME CLASS: 94HB
- ◆ COLOR: BLACK
- ◆ UNIT: mm



PART NO	PACKAGE
RF-1055I	1000

RUBBER FOOT

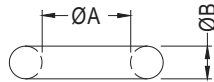
- ◆ MATERIAL: RUBBER
- ◆ COLOR: BLACK/GRAY
- ◆ UNIT: mm



PART NO	A	B	C	D	E
RF-018	22.3	19.6	4.9	9.0	9.8
RF20-10	21.0	18.1	10.6	6.9	10.6
RF-029	22.3	19.0	6.5	7.2	10.2

O RING

- ◆ MATERIAL: NBR
- ◆ COLOR: BLACK
- ◆ UNIT: mm

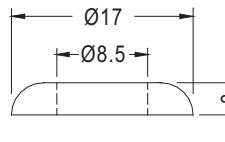


PART NO	A	B	PACKAGE
OR-2	2.0	1.0	2000
OR-2.7	2.75	0.6	
OR-2.8	2.8	0.5	
OR-2.9	2.9	1.78	
OR-3.6	3.6	1.78	
OR-4	4.0	2.0	
OR-4.6	4.6	1.78	
OR-5	5.0	1.0	
OR-5.8	5.8	1.9	

PART NO	A	B	PACKAGE
OR-6	6.02	2.6	2000
OR-7.6	7.65	1.78	
OR-7.9	7.9	1.0	
OR-11	11.0	2.0	
OR-21.3	21.3	3.0	
OR-25.2	25.2	3.5	
OR-84.4	84.4	3.1	500
OR-88	20.0	1.0	2000

RUBBER WASHER

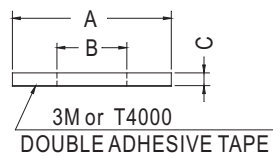
- ◆ MATERIAL: RUBBER
- ◆ COLOR: BLACK
- ◆ UNIT: mm



PART NO
RWF8.5-3N

- ◆ MATERIAL: RUBBER
- ◆ COLOR: BLACK
- ◆ UNIT: mm

✿ 用途: 背膠式, 可快速將華司固定於機殼, 黏性佳, 不脫落。



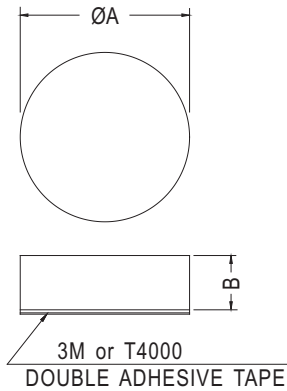
PART NO	A	B	C
RWF3.5-0.5	8.0	3.5	0.5
RWF3.5-1			1.0

PART NO	A	B	C
RWF3.5-1.5	11.0	3.5	1.5
RWF18-8.5-15	18.0	8.5	
RWF20-1.5	20.0	6.0	
RWF25-2	25.0	11.0	2.0
RWF40-2	40.0	12.0	
RWF43-2	43.0	30.1	

RUBBER FOOT

- ◆ MATERIAL: RUBBER
- ◆ COLOR: BLACK/GRAY/COMPUTER
- ◆ UNIT: mm
- ◆ OTHER MATERIALS AVAILABLE:
EPDM, SILICON,
- ◆ PRL9-4 MATERIAL: PORN
- ◆ OPTIONAL THICKNESS: 0.5~3.2mm

✿ WE MAKE DIFFERENT SIZE FOR YOUR ORDER ◦



PART NO	A	B
RF3.8-2	3.8	2.0
RF0415		1.5
RF4-0.5	4.0	0.5
RF4-0.6		0.6
RF4.5-1.5	4.5	1.5
RF4.5-2.7		2.7
RF4.8-1	4.8	1.0
RF5-1.5		1.5
RF5-2	5.0	2.0
RF5-2.5		2.5
RF5-3.5		3.5
RF5.3-0.7	5.3	0.7
RF5.5-1.6	5.5	1.6
RF5.6-2	5.6	2.0
RF6-0.5		0.5
RF6-0.8		0.8
RF6-0.9		0.9
RF6-1		1.0
RF6-1.3		1.3
RF6-1.5	6.0	1.5
RF6-2		2.0
RF6-2.5		2.5
RF6-3		3.0
RF6-3.5		3.5
RF6.4-2.6	6.4	2.6
RF6.5-1	6.5	1.0
RF6.5-2.5		2.5
RF6.6-1.5		1.5
RF6.6-1.8	6.6	1.8
RF6.6-2		2.0
RF7-0.5		0.5
RF7-0.9		0.9
RF7-1		1.0
RF7-1.5	7.0	1.5
RF7-2		2.0
RF7-2.5		2.5
RF7-2.7		2.7
RF7.2-1.5	7.2	1.5
RF7.5-2	7.5	2.0
RF-001		1.8
RF8-0.5	8.0	0.5

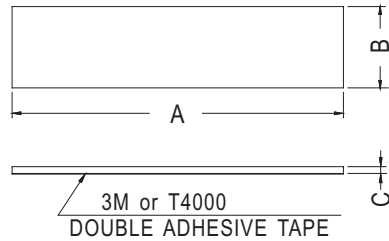
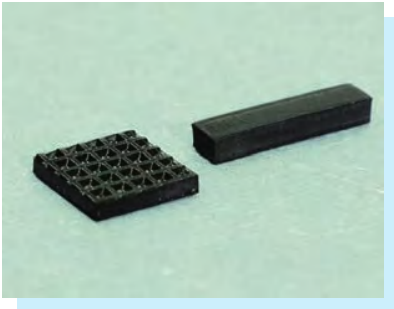
PART NO	A	B
RF8-1		1.0
RF8-1.4		1.4
RF8-1.5	8.0	1.5
RF8-2		2.0
RF8-2.5		2.5
RF8-3		3.0
RF8.5-1.5	8.5	1.5
RF8.5-2		2.0
RF9-1		1.0
RF9-1.2		1.2
RF9-1.5	9.0	1.5
RF9-2		2.0
RF9-2.5		2.5
RF9-3		3.0
RF9.5-0.8		0.8
RF9.5-1.5	9.5	1.5
RF9.5-1.8		1.8
RF9.5-2		2.0
RF9.5-3		3.0
RF10-0.8		0.8
RF10-1		1.0
RF10-1.3		1.3
RF-1016	10.0	1.6
RF-1018		1.8
RF10-2		2.0
RF10-3		3.0
RF10.5-1	10.5	1.0
RF10.5-15		1.5
RF10.5-2		2.0
RF-11632	11.6	3.2
RF12-1.5		1.5
RF-1210		1.0
RF12-2.7		2.7
RF-1220	12.0	2.0
RF12-3		3.0
RF12-3.6		3.6
RF-1232		3.2
RF-12520	12.5	2.0
RF-12.5-1		1.0
RF12732	12.7	3.2
RF13-1	13.0	1.0

PART NO	A	B
RF13-3	13.0	3.0
RF14-4	14.0	4.0
RF14530		3.0
RF14.5-4	14.5	4.0
RF1463	14.6	3.0
RF-1510		1.0
RF-1520	15.0	2.0
RF-1530		3.0
RF16.5-3	16.5	3.0
RF18-1.3		1.3
RF18-1.5	18.0	1.5
RF18-2.5		2.5
RF19-1		1.0
RF19-2	19.0	2.0
RF19-3		3.0
RF19-4		4.0
RF-19823	19.8	2.3
RF20-1		1.0
RF20-1.5		1.5
RF20-1.8	20.0	1.8
RF-2023		2.3
RF-2025		2.5
RF-2030		3.0
RF22-2		2.0
RF22-2.5	22.0	2.5
RF-2220		2.0
RF24.6-3	24.6	3.0
RF25-2.3	25.0	2.3
RF27-3	27.0	3.0
RF28-3.2	28.0	3.2
RF30-2	30.0	2.0
RF40-1	40.0	1.0
RF58-1.5		1.5
RF58-2	58.0	2.0

RUBBER FOOT

- ◆ MATERIAL: RUBBER
- ◆ COLOR: BLACK/GRAY/COMPUTER
- ◆ UNIT: mm
- ◆ OTHER MATERIALS AVAILABLE: EPDM, SILICON, ...
- ◆ OPTIONAL THICKNESS IS BETWEEN 0.5~10mm

✿ WE MAKE DIFFERENT SIZE FOR YOUR ORDER ◦



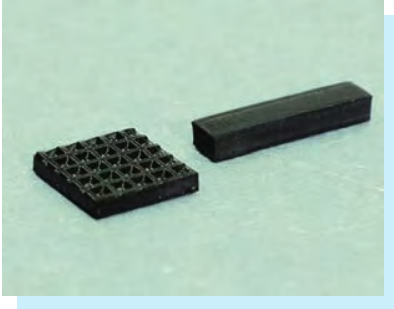
PART NO	A	B	C	
SF050435	5.0	4.5	3.5	
SF062313	6.0	2.3	1.3	
SF060425		4.0	2.5	
SF652840	6.5	2.8	4.0	
SF652850		5.0		
SF070215	7.0	2.0	1.5	
SF070216		1.6		
SF070304		3.0	0.4	
SF073512		3.5	1.2	
SF070420		4.0	2.0	
SF070620		6.0	2.5	
SF080625		8.0	2.5	3.0
SF852530		8.5	2.5	2.0
SF853520			3.5	2.5
SF80452		8.0	4.5	2.0
SF090855	9.6	8.0	5.5	
SF100616	9.9	6.0	1.6	
SF100119	10.0	1.9	1.9	
SF103512		3.5	1.2	
SF100409		4.0	0.9	
SF100510		5.0	1.0	
SF100520		2.0		
SF100712		7.0	1.2	
SF100825		8.0	2.5	
SF100850		5.0		
SF100730		10.5	7.2	3.0
SF110830		11.5	8.0	
SF118781	11.8	7.8	1.0	
SF120565	12.0	5.0	6.5	
SF120810		8.5	1.0	
SF129515		9.5	1.5	
SF121530		15.0	3.0	
SF1256535	12.5	6.5	3.5	
SF1251008		10.0	0.8	
SF-1251015		1.5		
SF130620	13.0	6.0	2.0	
SF130630		3.0		
SF130735		7.0	3.5	
SF130740		4.0		
SF130855		13.5	8.0	5.5
SF132525		13.0	2.5	2.5

PART NO	A	B	C
SF140430	14.0	4.0	3.0
SF140440		4.0	
SF150320	15.0	3.2	2.0
SF150610		6.0	1.0
SF151016		10.0	1.6
SF151930		1.9	
SF152530		25.0	3.0
SF155030		50.0	
SF1585601	15.8	5.6	1.0
SF151025		10.0	2.5
SF-163530	16.0	3.5	3.0
SF160536		5.0	3.6
SF170525	17.0	5.0	2.5
SF1724330	17.2	4.3	3.0
SF180930	18.0	9.0	1.0
SF181010		10.0	2.0
SF181020		5.6	4.0
SF195640	19.0	5.7	2.0
SF195720		7.7	4.0
SF-197774	19.7	7.7	6.0
SF197760		8.0	1.4
SF190814		1.5	
SF190815		2.3	
SF-1979723		9.7	2.5
SF1979725		3.0	
SF1979730		20.0	1.5
SF-1972015		2.5	
SF202515		4.0	1.0
SF200410		2.0	
SF200420	5.0	1.0	1.5
SF200510		6.3	6.8
SF200515	6.8		
SF200563	20.0	7.0	2.5
SF200568		1.0	
SF200725		1.5	
SF201010		2.0	
SF201015		3.5	
SF201020		5.6	
SF201035		14.0	6.5
SF201056		15.0	1.5
SF201065			
SF201465			
SF201515			

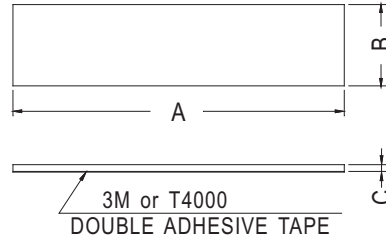
PART NO	A	B	C	
SF200612	20.5	6.0	1.2	
SF210804	21.5	8.6	0.4	
SF-221615	22.0	16.0	1.5	
SF227640	22.6	7.6	4.0	
SF237640	23.0			
SF230610	23.7	6.5	1.0	
SF246011	24.8	6.0	1.1	
SF250535	25.0	5.0	3.5	
SF250550		5.0	5.0	
SF250760		7.0	6.0	
SF250810		8.0	1.0	
SF250815		1.5		
SF250820		2.0		
SF251235		12.0	3.5	
SF251224		25.4	12.7	2.4
SF251232		3.2		
SF260510		26.8	5.5	1.0
SF270830	27.0	8.0	3.0	
SF271810		18.0	1.0	
SF271820		2.0		
SF279032	27.5	9.0	3.2	
SF-3064	30.0	6.0	4.0	
SF303555		3.5	5.5	
SF-30709		7.0	0.9	
SF3038		8.0	3.8	
SF-301120		11.0	2.0	
SF-301140		4.0		
SF301230		12.0	3.0	
SF301250		5.0		
SF301525		15.0	2.5	
SF302055		20.0	5.5	
SF302501	25.0	1.0		
SF30511	30.5	11.0	7.0	
SF311510	31.5	15.5	1.0	
SF311515		1.5		
SF3267225	32.0	6.7	2.25	
SF321720		17.0	2.0	
SF321725		2.5		
SF332055	33.0	20.0	5.5	
SF332385	33.3	23.3	8.5	
SF331125	33.5	11.5	2.5	

RUBBER FOOT

- ◆ MATERIAL: RUBBER
- ◆ COLOR: BLACK/GRAY/COMPUTER
- ◆ UNIT: mm
- ◆ OTHER MATERIALS AVAILABLE: EPDM, SILICON,
- ◆ OPTIONAL THICKNESS IS BETWEEN 0.5~10mm



✿ WE MAKE DIFFERENT SIZE FOR YOUR ORDER ◦

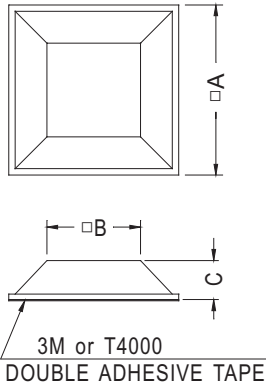
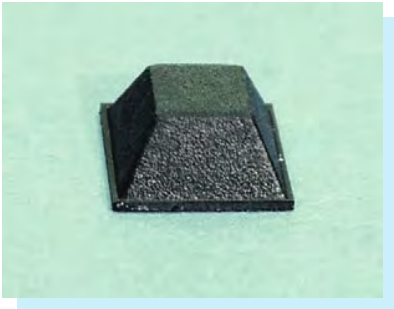


PART NO	A	B	C
SF340220	34.0	2.0	2.0
SF340904	34.6	9.5	0.4
SF-340901	34.7	9.7	1.0
SF351001		10.0	
SF351580	35.0	15.0	8.0
SF352508		25.0	0.8
SF361810			1.0
SF361820	36.0	18.0	2.0
SF400509	39.5	5.0	0.9
SF-4009			1.5
SF400924		9.0	2.4
SF400930			3.0
SF401040		10.5	4.0
SF401235	40.0		3.5
SF401240		12.0	4.0
SF401250			5.0
SF401715		17.5	1.5
SF442010	44.5	20.0	10.0
SF451020	45.0	10.0	2.0
SF473530	47.5	3.5	3.0
SF481040		10.0	4.0
SF484410	48.0	44.0	
SF491210	49.0	12.0	1.0
SF500620	50.0	6.0	2.0
SF501038	50.0		3.8
SF541010	54.0	10.0	1.0
SF550515	55.0	5.0	1.5
SF582508			0.8
SF582514	58.0	25.0	1.4
SF582516			1.6
SF600610			1.0
SF600613		6.0	1.3
SF600625			2.5
SF-6064			4.0
SF600907		9.0	0.7
SF601010	60.0		1.0
SF601025		10.0	2.5
SF6017530		17.5	3.0
SF602010		20.0	10.0
★ SF606767I		6.7	6.7
SF652020	65.0	20.0	2.0
SF654030		40.0	3.0

PART NO	A	B	C
SF700525		5.0	2.5
SF701820	70.0	18.0	2.0
SF702010		20.0	1.0
SF764005	76.0	40.0	
SF-801004	80.0	10.0	0.5
SF845208	84.6	52.6	0.8
SF880810	88.0	8.0	1.0
SF951232	95.0	12.0	3.2
SF980830	98.0	8.0	3.0
SF993555		3.5	5.5
SF990915	99.0	9.9	1.5
LSF-002	100.0	12.0	3.5
SF107581	107.0	58.0	1.5
SF1100540		5.6	4.0
SF1101010	110.0		1.0
SF1111009	111.0	10.0	0.9
SF1200310	120.0	3.0	1.0
SF1254620	125.0	46.0	2.0
SF1302030			3.0
SF1302020	130.0	20.0	
SF1340220	134.0	2.0	2.0
SF1400520		5.0	
SF140101	140.0	10.0	
SF140251		25.0	1.0
SF14510520	145.0	105.0	2.0
SF1461010	146.0	10.0	1.0
SF1500712		7.0	1.2
SF-1501004	150.0	10.0	0.5
SF1501515		15.0	1.5
SF1600610	160.0	6.0	1.0
SF1664930	166.5	49.0	3.0
SF2500515		5.0	1.5
SF2506520	250.0	65.0	2.0
SF2701655	270.0	165.0	0.5
SF2581420	258.0	14.5	2.0
SF3101150		11.6	
SF3101250	310.0	12.0	5.0
SF5400208	540.0	2.9	0.8

RUBBER FOOT

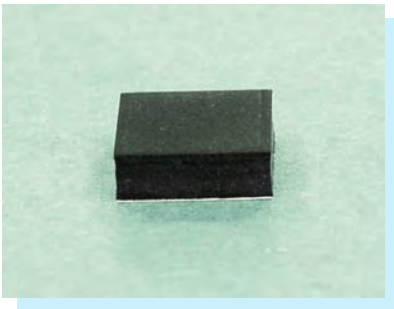
- ◆ MATERIAL: RUBBER/PU
- ◆ COLOR: BLACK/GRAY/COMPUTER
- ◆ UNIT: mm



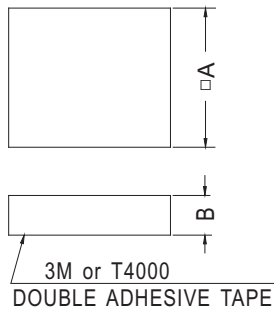
PART NO	A	B	C
SF-004	12.7	9.0	3.5
SF-005	12.7	7.0	6.0
SF-005I	12.7	7.0	5.5
SF-006	20.0	14.0	7.6
SF-007	10.5	8.6	2.5
SF-009	12.5	9.5	4.0
SF-016	12.7	9.8	3.0
SF-017	12.5	9.7	3.5

RUBBER FOOT

- ◆ MATERIAL: RUBBER
- ◆ COLOR: BLACK/GRAY/COMPUTER
- ◆ UNIT: mm
- ◆ OTHER MATERIALS AVAILABLE: EPDM, SILICON,
- OPTIONAL THICKNESS BETWEEN 0.7~5.0mm



♣ WE MAKE DIFFERENT SIZE FOR YOUR ORDER ◦



PART NO	A	B	
SF-050510	5.0	1.0	
SF050512		1.2	
SF-6610	6.0	1.0	
SF-6615		1.5	
SF060625		2.5	
SF-664		4.0	
SF-665		5.0	
SF060660		6.0	
SF-001		6.4	3.0
SF070715	7.0	1.5	
SF070720		2.0	
SF070740		4.0	
SF070755		5.5	
SF070780		8.0	
SF-080801		8.0	1.0
SF-080802			2.0
SF080823	2.3		
SF-0808025	2.5		
SF090945	9.0		4.5
SF-002	9.7	2.0	

PART NO	A	B
SF-979735	9.7	3.5
SF101007	10.0	0.7
SF101009		0.9
SF101010		1.0
SF101016		1.6
SF101020		2.0
SF101023		2.3
SF101025		2.5
SF101030		3.0
SF101035		3.5
SF101040		4.0
SF101050	5.0	
SF101060	6.0	6.0
SF111160		11.0
SF11511550	11.5	5.0
SF11511565		6.5
SF-121212	12.0	1.2
SF121225		2.5
SF-003		5.0
SF121255		5.5

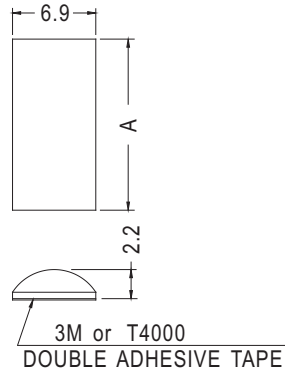
PART NO	A	B
SF121270	12.0	7.0
SF-1272	12.7	2.3
SF-131320	13.0	2.0
SF14142	14.0	
SF141480		15.0
SF151512	15.0	1.5
SF-151515		3.5
SF151535		5.0
SF151550	16.0	1.0
SF161610	17.0	2.5
SF171725	18.0	1.0
SF181810		2.0
SF181820		4.0
SF181840		5.0
SF181850	20.0	3.0
SF202030	25.4	5.0
SF25425450	40.0	1.0
SF404010		5.0
SF404050		50.0

RUBBER FOOT



- ◆ MATERIAL: RUBBER
- ◆ COLOR: BLACK/GRAY/ COMPUTER
- ◆ UNIT: mm
- ◆ OTHER MATERIALS AVAILABLE: EPDM, SILICON,

✿ WE MAKE DIFFERENT SIZE FOR YOUR ORDER ◦

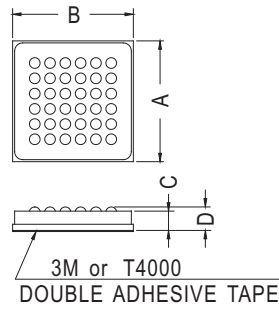


PART NO	A
SF14722	14.0
SF28722	27.8

RUBBER FOOT



- ◆ MATERIAL: RUBBER
- ◆ COLOR: BLACK
- ◆ UNIT: mm



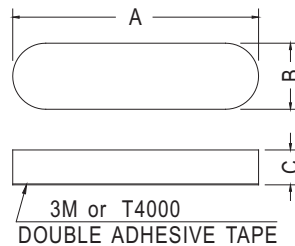
PART NO	A	B	C	D
P004	14.0	13.5	2.1	2.6
P005	15.0	14.5	2.6	3.1

RUBBER FOOT



- ◆ MATERIAL: RUBBER
- ◆ COLOR: BLACK/GRAY/ COMPUTER
- ◆ UNIT: mm
- ◆ OTHER MATERIALS AVAILABLE: EPDM, SILICON,

✿ WE MAKE DIFFERENT SIZE FOR YOUR ORDER ◦

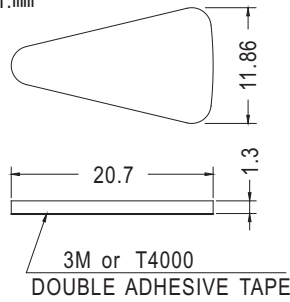


PART NO	A	B	C
PT005	26.8	7.2	3.8
PT-1762	17.5	6.5	2.0
PT200612	20.5	6.2	1.2
PT080210	8.0	2.0	1.0
PT100612	10.5	6.0	1.2
PT100614	10.5	6.0	1.4
PT160915	16.0	9.5	1.5
PT200617	20.5	6.2	1.7
PT270720	26.8	7.2	2.0
PT360712	36.0	7.0	1.2
PT690920	69.6	9.8	2.0

RUBBER FOOT



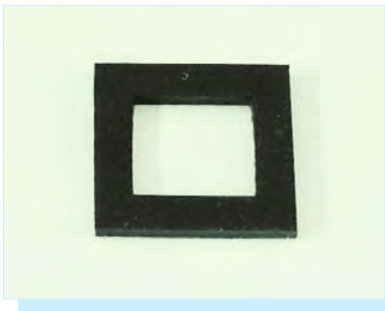
- ◆ MATERIAL:RUBBER
- ◆ COLOR:BLACK
- ◆ UNIT:mm



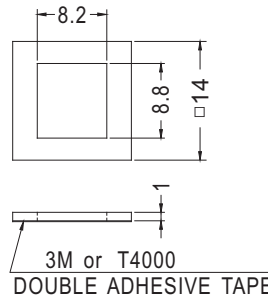
✿ WE MAKE DIFFERENT SIZE FOR YOUR ORDER ◦

PART NO	PACKAGE
TF201113	1000

RUBBER FOOT



- ◆ MATERIAL:RUBBER
- ◆ COLOR:BLACK
- ◆ UNIT:mm

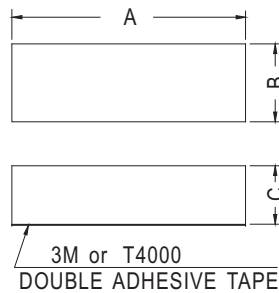


PART NO
SF141410

EVA FOAM



- ◆ MATERIAL:EVA
- ◆ COLOR:BLACK
- ◆ UNIT:mm
- ◆ PROVIDING SERVICE FOR ANY DIMENSIONS REQUIRED



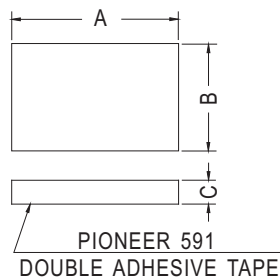
✿ WE MAKE DIFFERENT SIZE FOR YOUR ORDER ◦

PART NO	A	B	C
EVA120430	12	4.0	3.0

CPU EXCLUDE HEAT SILICON



- ◆ MATERIAL:SILICON RUBBER
- ◆ FLAME CLASS :94V-0
- ◆ COLOR:GRAY
- ◆ UNIT:mm
- ◆ THICKNESS:0.5~4.0mm
- ◆ PROVIDING SERVICE FOR ANY DIMENSIONS REQUIRED



✿ WE MAKE DIFFERENT SIZE FOR YOUR ORDER ◦

PART NO	A	B	C
CPU140920A	14	9.0	2.0