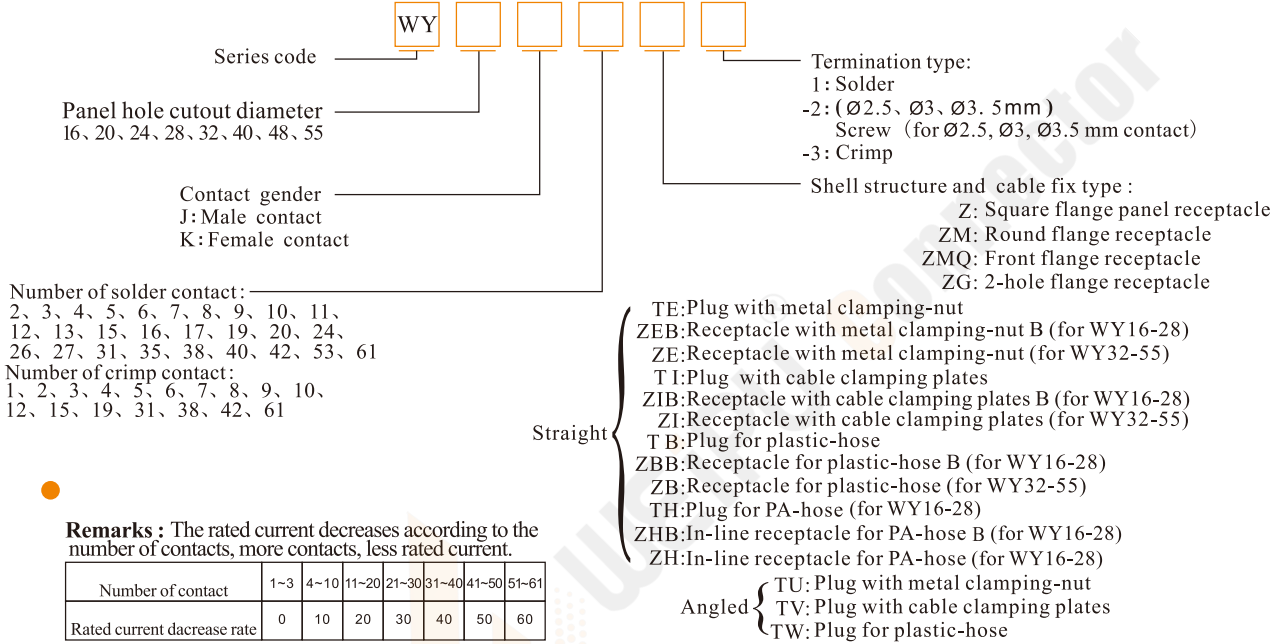




● WY Series

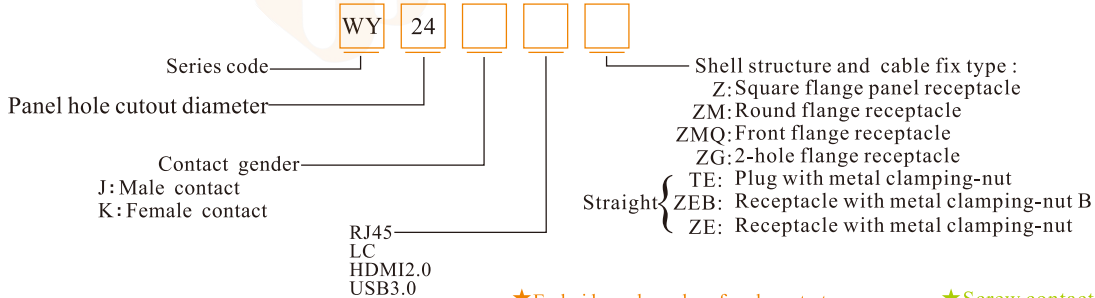
Part number system



Remarks: The rated current decreases according to the number of contacts, more contacts, less rated current.

Number of contact	1-3	4-10	11-20	21-30	31-40	41-50	51-61
Rated current decrease rate	0	10	20	30	40	50	60

Part number system



★ Each side can be male or female contact  
 ★ Solder contact spec see page P19

★ Screw contact spec see P21  
 ★ Crimp contact spec see P20

Material and spec

Coupling	Bayonet
Shell material	Zinc alloy with chrome plating
Insert material	PPS, max temperature 260 °C
Contact material	Brass with gold plating
Termination	Solder:Ø0.7, Ø1, Ø1.5, Ø1.6, Ø2.5, Ø3.5, Ø5.5mm; Screw:Ø2.5, Ø3, Ø3.5mm; Crimp:Ø1, Ø1.5, Ø2.5, Ø3.5, Ø5.5, Ø10mm
Mating cycle	500
Temperature range	-40°C ~ +85°C ; -20°C ~ +70°C

WY24 Series

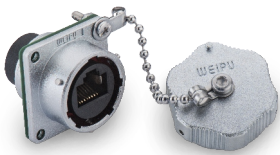
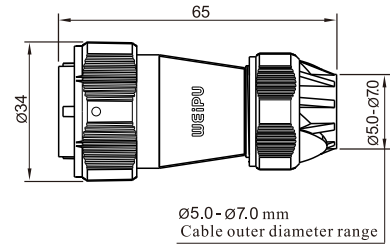


WY24



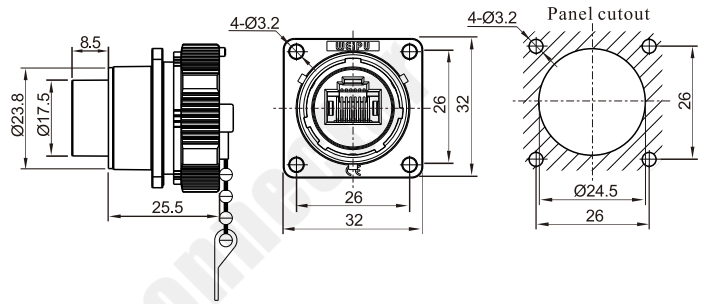
Plug with metal clamping-nut  
Mate with WY24KRJ45Z

WY24JRJ45TE



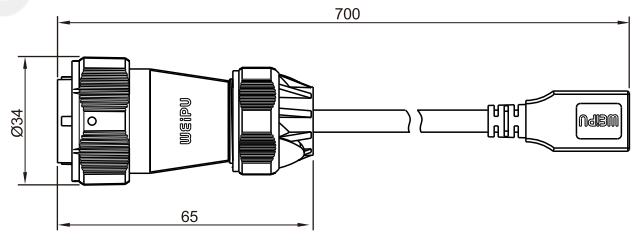
Square flange receptacle  
Mate with WY24JRJ45TE

WY24KRJ45Z



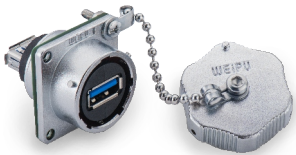
Plug with metal clamping-nut  
Mate with WY24KUSB3.0Z

WY24JUSB3.0TE



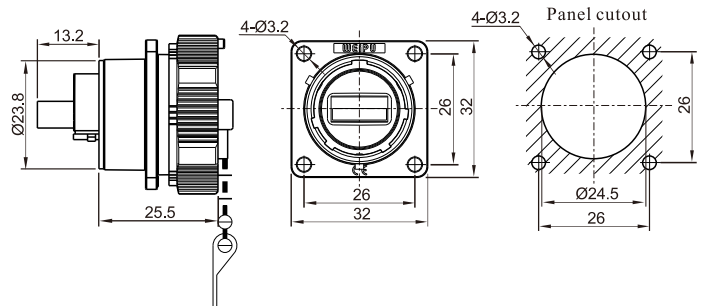
Wire length:  
0.5m  
1.0m  
1.5m  
2.0m  
3.0m

★ Wire length can be customized



Square flange receptacle  
Mate with WY24JUSB3.0TE

WY24KUSB3.0Z





# WY24 Series

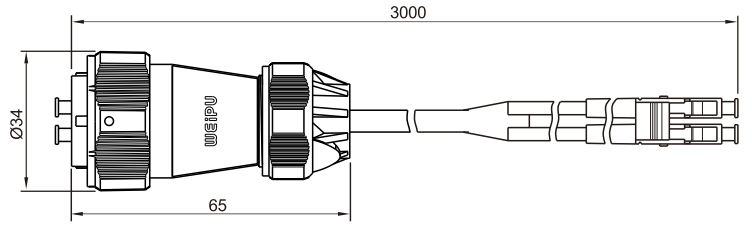
# WY24



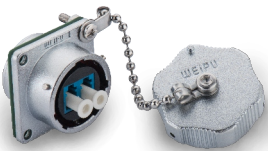
Plug with metal clamping-nut  
Mate with WY24KLCZ

**WY24JLCTE**

- Wire length:
- 0.5m
- 1.0m
- 1.5m
- 2.0m
- 3.0m

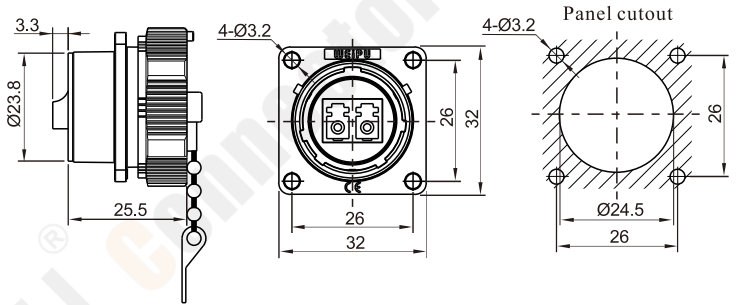


★ Wire length can be customized



Square flange receptacle  
Mate with WY24JLCTE

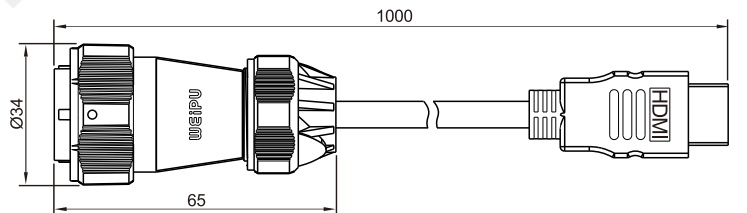
**WY24KLCZ**



Plug with metal clamping-nut  
Mate with WY24KHDMI2.0Z

**WY24JHDMI2.0TE**

- Wire length:
- 0.5m
- 1.0m
- 1.5m
- 2.0m
- 3.0m



★ Wire length can be customized



Square flange receptacle  
Mate with WY24JHDMI2.0TE

**WY24KHDMI2.0Z**

