

PLUG AND SOCKET TERMINAL BLOCK PID



BC01562* SERIES. 3.50 mm. (0.138") pitch. (PID Push-In-Design)

General Features

- Available in 2 through 40 circuits
- Mates with 3.50 mm. pitch headers (socket) pluggable terminal Blocks BC01562 Series
- Front or side entry. Full polarised.
- Meet UL and IEC 61984 standards

Materials

- Insulator: PA66 UL 94 V-0. PCB type, optional: High temp. Plastic and tail 2.60mm. Add to end of part number L
- Contact: Cooper alloy tin plated
- Operating temperature: -40°C to +105°C
- RoHS compliant

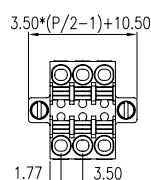
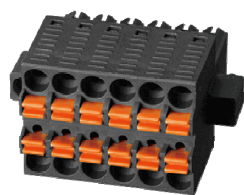
Dimension Information

Electrical Features

- Voltage rating: 150V UL; 320V IEC;
- Rated current: 8 A UL / 10 A IEC
- Contact resistance: < 20 mΩ
- Rated surge voltage: 1600V UL / 2500 V IEC
- Insulation resistance: >500 MΩ

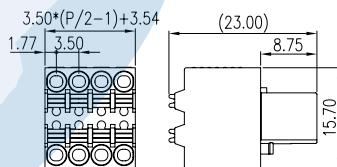
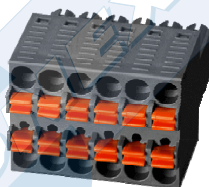
Mechanical features

- Wire strip length: 7-8.00 mm.
- Conductor cross section: AWG 28-16
- Durability: 25 cycles



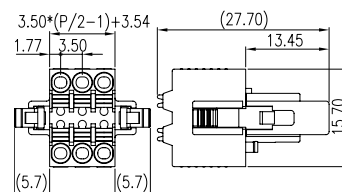
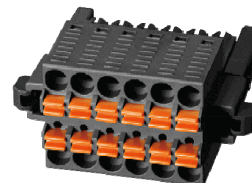
P/N: **BC01562A-XX-BK**

XX= N° CONTACTS



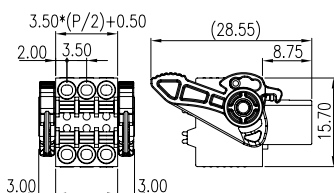
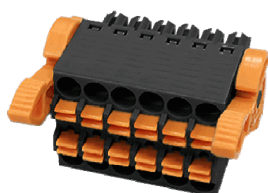
P/N: **BC01562B-XX-BK**

XX= N° CONTACTS



P/N: **BC01562C-XX-BK**

XX= N° CONTACTS



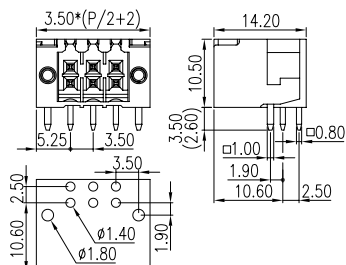
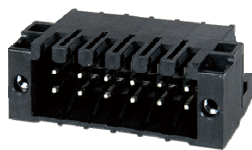
P/N: **BC01562D-XX-BK**

XX= N° CONTACTS

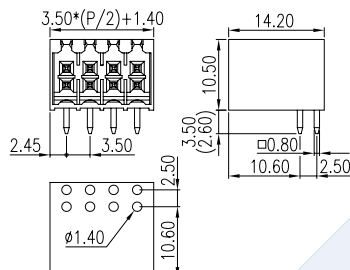
PLUG AND SOCKET TERMINAL BLOCK PID



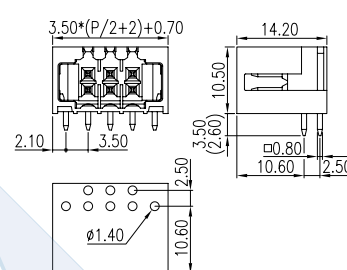
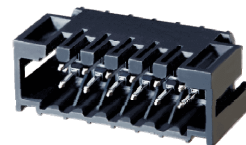
BC01562* SERIES. 3.50 mm. (0.138") pitch. (PID Push-In-Design)



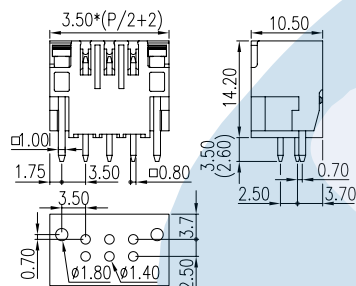
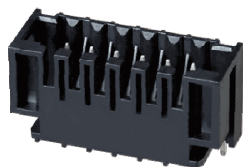
P/N: **BC015626-XX-BK**
XX= N° CONTACTS



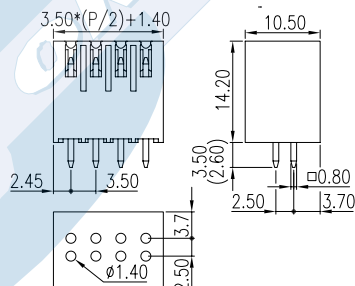
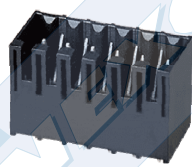
P/N: **BC015625-XX-BK**
XX= N° CONTACTS



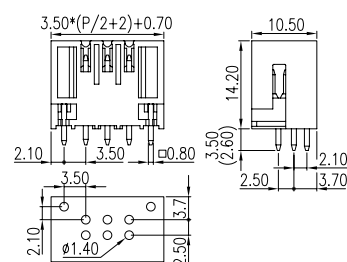
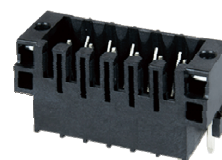
P/N: **BC015629-XX-BK**
XX= N° CONTACTS



P/N: **BC015621-XX-BK**
XX= N° CONTACTS



P/N: **BC015620-XX-BK**
XX= N° CONTACTS



P/N: **BC015624-XX-BK**
XX= N° CONTACTS